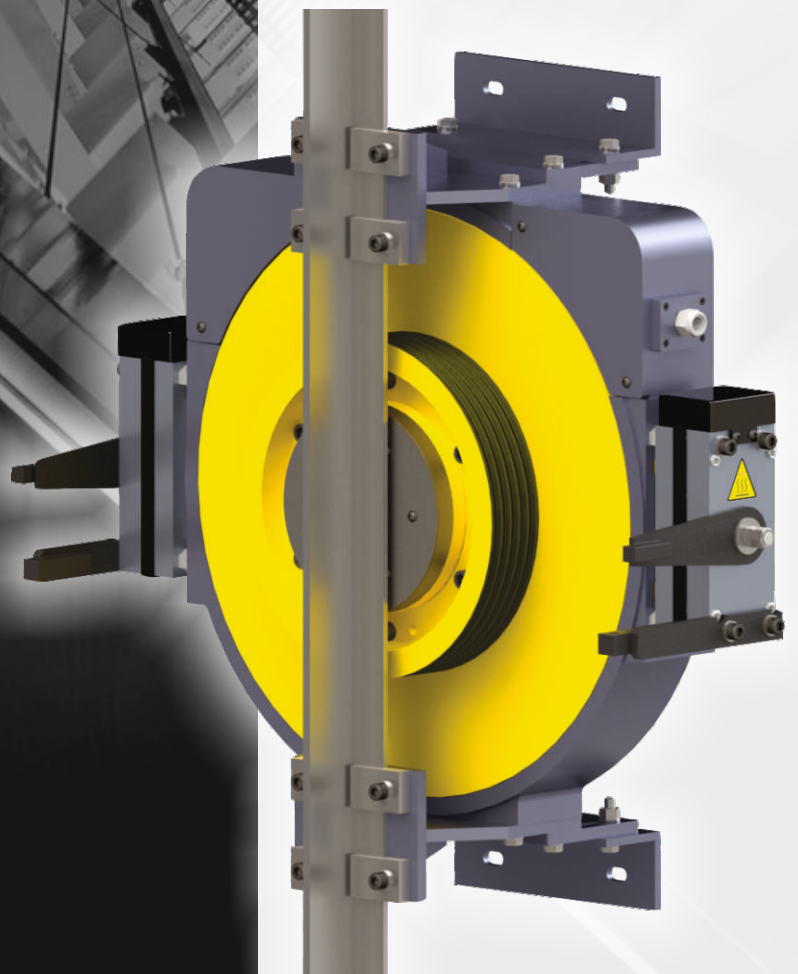


High Efficient Gearless Traction Machine

2025

www.apson.co.in





ABOUT US

APSON is an Indian multinational elevator component manufacturing company. With the vision of developing the safest and premium range of power-efficient elevator traction machines to fulfill the needs of the elevator industry; APSON was established in 2016 by the former promoter Mr. Arvind Panchal of a 60-year-old Indian multinational conglomerate Rabatex Group.

With 30 years of experience in the mechanical and automation industry; APSON signed a non-disclosable joint venture in 2016 for developing and manufacturing elevator traction machines. In 2018; APSON launched their complete range of elevator gearless traction machine as well as became world's first company to offer 4 Year Warranty on it.

APSON is the only company in India to have elevator motors up to 48 poles. Having a capacity range up to 7000 kg and speed up to 12.0 m/s our process of innovation in ultra-high-speed and heavy capacity elevator gearless traction machines is going on.

Under the bright foresight of Mr. Arvind Panchal (Founder – APSON MOTOR (INDIA) PRIVATE LIMITED), the company is achieving the milestones of success in providing highly efficient and qualitative elevator gearless traction machines across the globe.

Another pillar behind the success of APSON is Mr. Hiren Panchal (Managing Director – APSON MOTOR (INDIA) PRIVATE LIMITED) whose productive ideas, execution of business strategies, ways of promoting the adaption of new technology; has brought the revolution in the elevators Industry.

With our expertise in engineering and maintaining quality; we aim to keep the elevator and escalator industry safe and to ensure the safety of all passengers traveling into it.





INFRASTRUCTURE

Spreading over 20,000 square meter area with a total employment of 100+ hands directly or indirectly as well as equipped with state of art manufacturing facilities; APSON have one of the most advance production unit for elevator traction machine in the out skirts of Ahmedabad Metro.

APSON have dedicated assembly line for elevator gearless traction machines having a production capacity of 24,000 motors per annum.

Equipped with advance assembly line and testing facilities, such as automatic stator testing, load testing, over load testing, noise testing and many more; we make sure that we produce the safest products for our end users.

The company has envisaged further major investment for product development up-gradation, renovation and modernization of production and testing facilities as required from time to time.





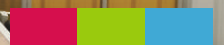
VISION

Our vision is to provide advance technology products for every segment of industry which can saves the environment with minimum power consumption at affordable cost.



MISSION

Our mission is to convert all end user of elevator geared traction machine in to elevator gearless traction machine for better growth of the industry as well as environment by energy saving.



MANAGEMENT



MR. ARVIND PANCHAL FOUNDER – APSON MOTOR (INDIA) PRIVATE LIMITED

Mr. Arvind Panchal is a far-sighted technocrat and investor with 40 years of experience in machinery design and industrial automation. He has gained his expertise in R&D and has successfully developed various types of textile and material handling machinery. He has been awarded with best R&D award in year 2006 by Central Ministry of Textiles for his meaningful contribution in textile industry.

Mr. Arvind Panchal strongly believe that without new innovation you can't survive your business for longer period and for that reason he keep working on new innovations. He learned from his father that "Quality is everyone's responsibility"; and that ideology is the key reason behind success of Mr. Arvind Panchal and companies under him.

After non-disclosable agreement with a foreign scientist for research and development of different types of elevator traction machine; He developed a full range of elevator traction machines with his own experience of development and made APSON the first brand in India to have a full range of elevator motors.

Due to the long term vision of Mr. Arvind Panchal as well as his innovation and quality thinking, today APSON is the most successful brand for elevator motors in India and the only company in the world with a 4 year warranty.

HIREN PANCHAL MANAGING DIRECTOR – APSON MOTOR (INDIA) PRIVATE LIMITED

Mr. Hiren Panchal is a mechanical engineer and third generation entrepreneur. He began his professional career in 2012 by working as Sales Executive in a Pharmaceutical Machinery Industry.

In 2013, he joined his 60 year old family business and was appointed as Executive Director for business analysis, research and development as well as International sales. During his tenure as Executive Director; Mr. Hiren Panchal gained his expertise in developing international relationships and promoting advance technology.

In 2016 with establishment of APSON; Mr. Hiren Panchal was appointed as Managing Director of APSON to execute all business strategies and make it a successful start-up. With help of his experience; Mr. Hiren Panchal executed all business strategies and made APSON as a recognized name in Elevator component industry within sort period of establishment.

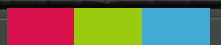


His focus on promoting high pole, power saving and long durability of motors helped APSON to reach this position. Due to all his efforts; Mr. Hiren Panchal achieve recognition as one of the youngest entrepreneur in elevator and escalator industry. Apart from APSON; he is also one of Founder of Elevator & Escalator Component Manufacturers' Association of India.





QUALITY IS OUR PASSION





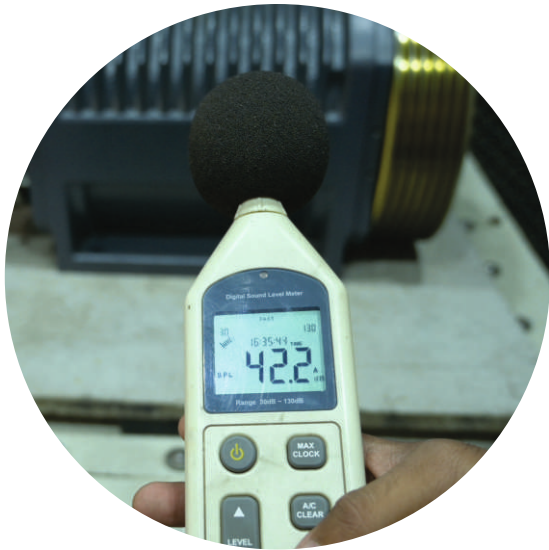
OUR
PASSION
DRIVES OUR
BUSINESS





Production and Quality Control Facilities





Noise proof room
for noise test of PMSM



Dust proof room
for assembly of PMSM



CNC
turning center



CNC vertical
milling center



CNC horizontal
machining center



Automatic coil
winding machine



On-load
PMSM testing



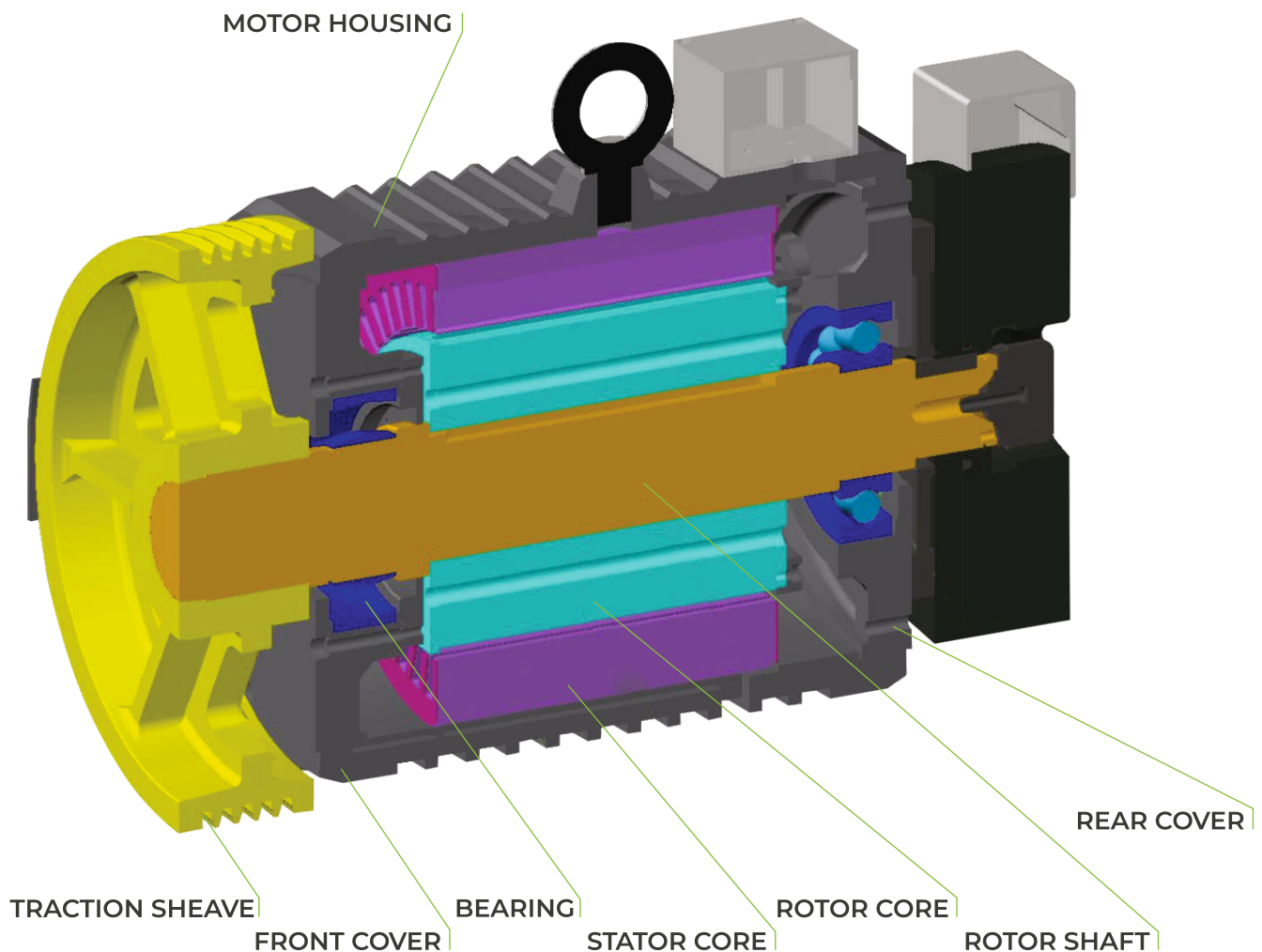
On-load
PMSM analysis





**INNER ROTOR
GEARLESS TRACTION
MACHINE**





INNER ROTOR **GEARLESS TRACTION** MACHINE

Inner rotor gearless traction machines are more suitable for machine room less application. It has larger shaft load area compared to outer rotor machine which is more suitable for higher static load of the machine. Due to the inner rotor technology, the rotating part of the motor which is known as rotor is connected to the shaft and the stator of the motor is placed near to the motor housing which causes low heating as well as higher stability of the machine.

In inner rotor elevator gearless traction machine, electromagnetic plate / disc brake is being used, which operates with lowest air gap as well as lowest operating noise.



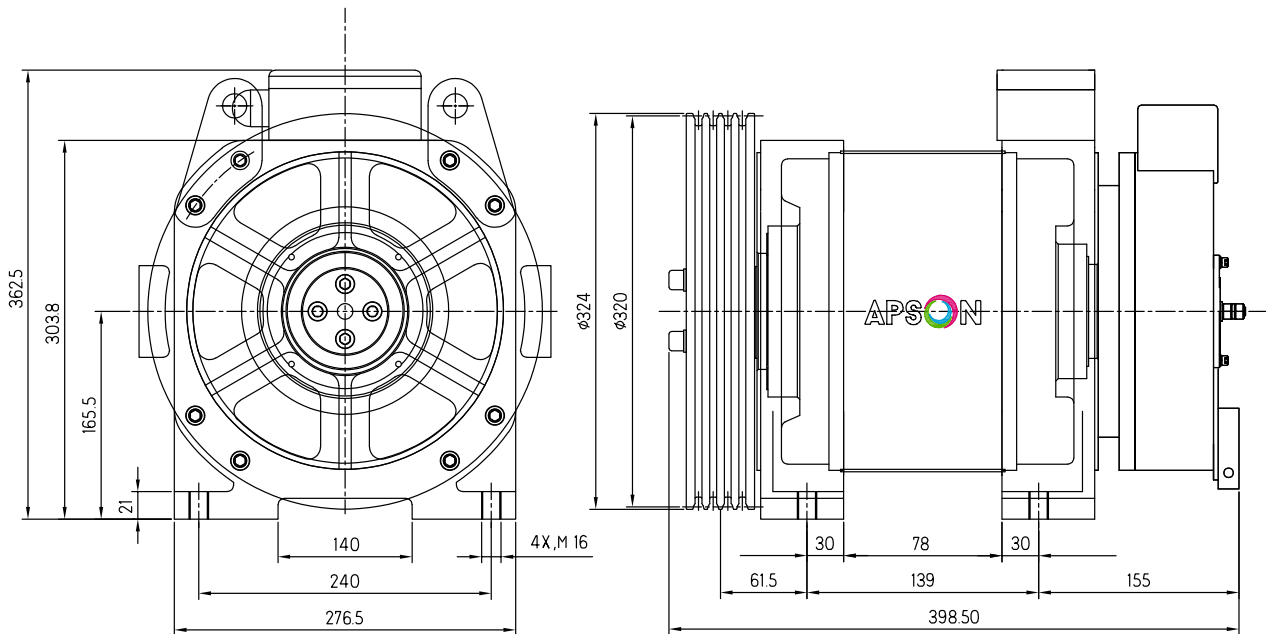


ES272-408 HOME ELEVATOR EXPERT

ECO STRONG PERMANENT MAGNET SYNCHRONOUS
ELEVATOR GEARLESS TRACTION MACHINE

ROPING	2:1
BALANCING	50%
DUTY CYCLE	S5-40%
STARTS / HOUR	180 ST/H
GROOVE TYPE	UNDERCUT "U"
IP PROTECTION	IP41
POLE	24
STATIC LOAD	1500 kg
MACHINE WEIGHT	130 kg*
BRAKE VOLTAGE	DC110V
INSULATION CLASS	F
GROOVE β'	90°
GROOVE γ	30°
WARRANTY	7 YEAR*

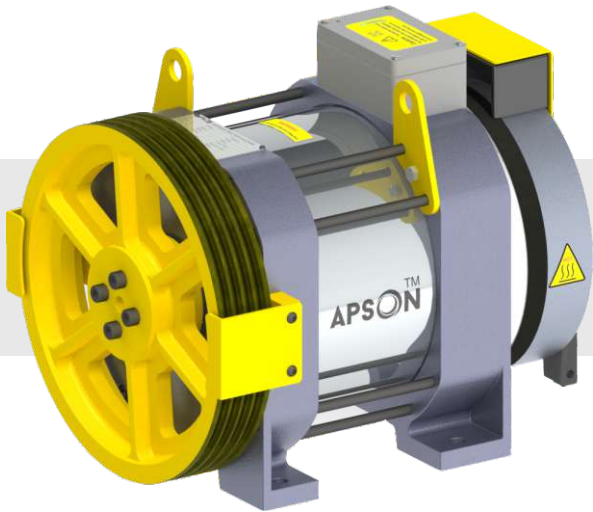




SPECIFICATION SHEET

MODEL	RATED VOLTAGE	CAPACITY	CABIN SPEED	RATED OUTPUT POWER	RATED CURRENT	RATED SPEED	FREQ.	SHEAVE DIA.	TORQUE	GROOVE DETAILS
	V	kg	m/s	kW	A	rpm	Hz	mm	N.m.	
ES272	AC220	272	0.50	1.00	6.00	95	19.1	Ø200	100	4 × Ø8 × 12
ES272	AC220	272	1.00	2.00	10.0	191	38.2	Ø200	100	4 × Ø8 × 12
ES272	AC380	272	0.50	1.00	3.00	95	19.1	Ø200	100	4 × Ø8 × 12
ES272	AC380	272	1.00	2.00	6.00	191	38.2	Ø200	100	4 × Ø8 × 12
ES408	AC220	408	0.50	1.20	7.00	95	19.1	Ø200	122	4 × Ø8 × 12
ES408	AC220	408	1.00	2.40	13.0	191	38.2	Ø200	122	4 × Ø8 × 12
ES408	AC220	408	0.50	1.20	7.00	80	15.9	Ø240	147	4 × Ø8 × 12
ES408	AC220	408	1.00	2.40	13.0	159	31.8	Ø240	147	4 × Ø8 × 12
ES408	AC380	408	0.50	1.20	4.00	95	19.1	Ø200	122	4 × Ø8 × 12
ES408	AC380	408	1.00	2.40	8.00	191	38.2	Ø200	122	4 × Ø8 × 12
ES408	AC380	408	0.50	1.20	4.00	80	15.9	Ø240	147	4 × Ø8 × 12
ES408	AC380	408	1.00	2.40	8.00	159	31.8	Ø240	147	4 × Ø8 × 12



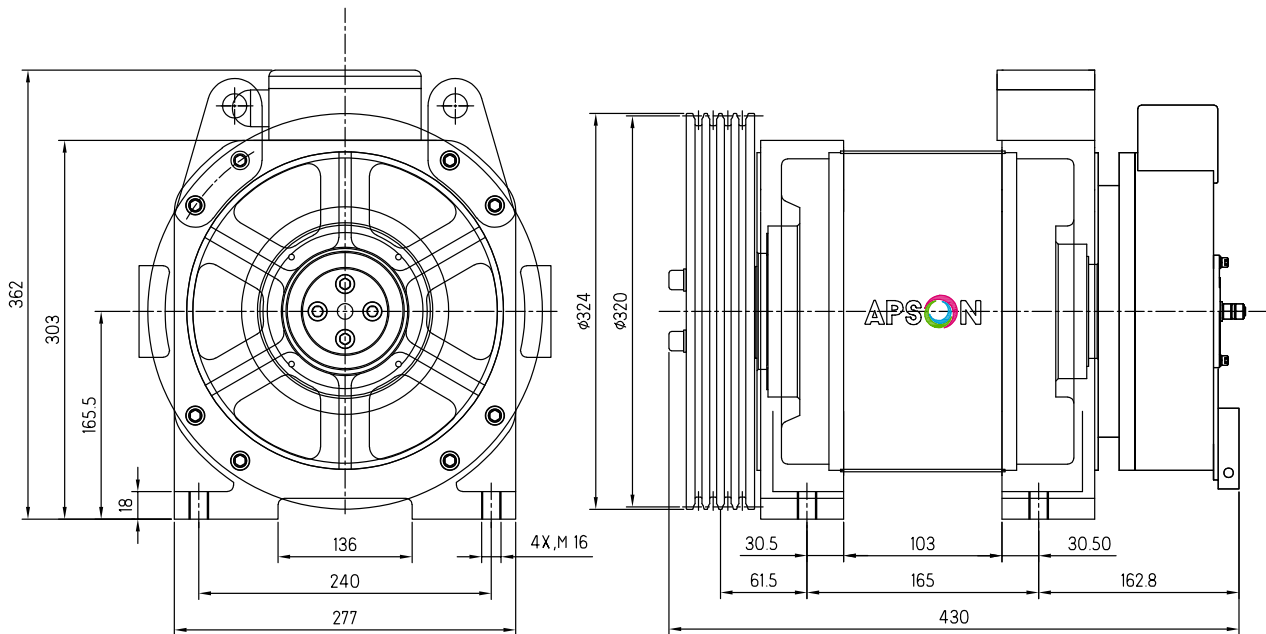


ECO STRONG ES450

ECO STRONG PERMANENT MAGNET SYNCHRONOUS ELEVATOR GEARLESS TRACTION MACHINE

ROPING	2:1
BALANCING	50%
DUTY CYCLE	S5-40%
STARTS / HOUR	180 ST/H
GROOVE TYPE	UNDERCUT "U"
IP PROTECTION	IP41
POLE	24
STATIC LOAD	2500 kg
MACHINE WEIGHT	145 kg*
BRAKE VOLTAGE	DC110V
INSULATION CLASS	F
GROOVE β'	90°
GROOVE γ	30°
WARRANTY	2 YEAR*

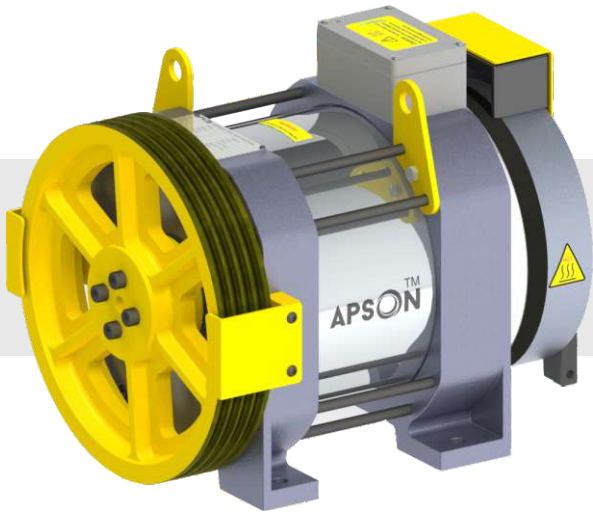




SPECIFICATION SHEET

MODEL	RATED VOLTAGE	CAPACITY	CABIN SPEED	RATED OUTPUT POWER	RATED CURRENT	RATED SPEED	FREQ.	SHEAVE DIA.	TORQUE	GROOVE DETAILS
	V	kg	m/s	kW	A	rpm	Hz	mm	N.m.	
ES450	AC220	450	0.50	1.60	10.0	60	11.9	Ø320	249	4 × Ø8 × 12
ES450	AC220	450	0.75	2.30	16.0	90	17.9	Ø320	249	4 × Ø8 × 12
ES450	AC220	450	1.00	3.10	16.0	119	23.8	Ø320	249	4 × Ø8 × 12
ES450	AC380	450	0.50	1.60	5.50	60	11.9	Ø320	249	4 × Ø8 × 12
ES450	AC380	450	0.75	2.30	8.50	90	17.9	Ø320	249	4 × Ø8 × 12
ES450	AC380	450	1.00	3.10	8.50	119	23.8	Ø320	249	4 × Ø8 × 12
ES450	AC380	450	1.25	3.90	12.5	149	29.8	Ø320	249	4 × Ø8 × 12
ES450	AC380	450	1.50	4.70	12.5	179	35.8	Ø320	249	4 × Ø8 × 12



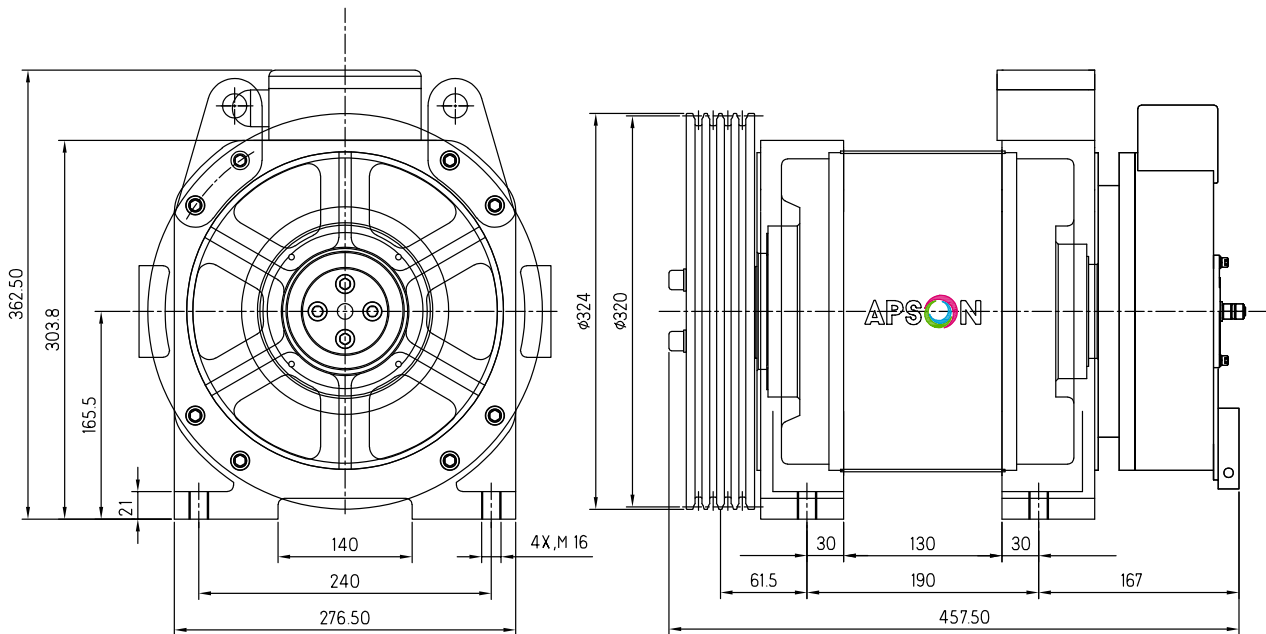


ECO STRONG ES544

ECO STRONG PERMANENT MAGNET SYNCHRONOUS ELEVATOR GEARLESS TRACTION MACHINE

ROPING	2:1
BALANCING	50%
DUTY CYCLE	S5-40%
STARTS / HOUR	180 ST/H
GROOVE TYPE	UNDERCUT "U"
IP PROTECTION	IP41
POLE	24
STATIC LOAD	2500 kg
MACHINE WEIGHT	160 kg*
BRAKE VOLTAGE	DC110V
INSULATION CLASS	F
GROOVE β'	90°
GROOVE γ	30°
WARRANTY	2 YEAR*





SPECIFICATION SHEET

MODEL	RATED VOLTAGE	CAPACITY	CABIN SPEED	RATED OUTPUT POWER	RATED CURRENT	RATED SPEED	FREQ.	SHEAVE DIA.	TORQUE	GROOVE DETAILS
	V	kg	m/s	kW	A	rpm	Hz	mm	N.m.	
ES544	AC380	544	0.50	2.00	7.00	80	15.9	Ø240	218	4 × Ø8 × 12
ES544	AC380	544	1.00	3.70	9.00	159	31.8	Ø240	218	4 × Ø8 × 12
ES544	AC380	544	1.25	4.50	13.0	199	39.8	Ø240	218	4 × Ø8 × 12
ES544	AC380	544	1.50	5.60	17.0	239	47.7	Ø240	218	4 × Ø8 × 12
ES544	AC380	544	0.50	2.00	7.00	60	11.9	Ø320	300	4 × Ø8 × 12
ES544	AC380	544	1.00	3.70	9.00	119	23.8	Ø320	300	4 × Ø8 × 12
ES544	AC380	544	1.25	4.50	13.0	149	29.8	Ø320	300	4 × Ø8 × 12
ES544	AC380	544	1.50	5.60	17.0	179	35.8	Ø320	300	4 × Ø8 × 12



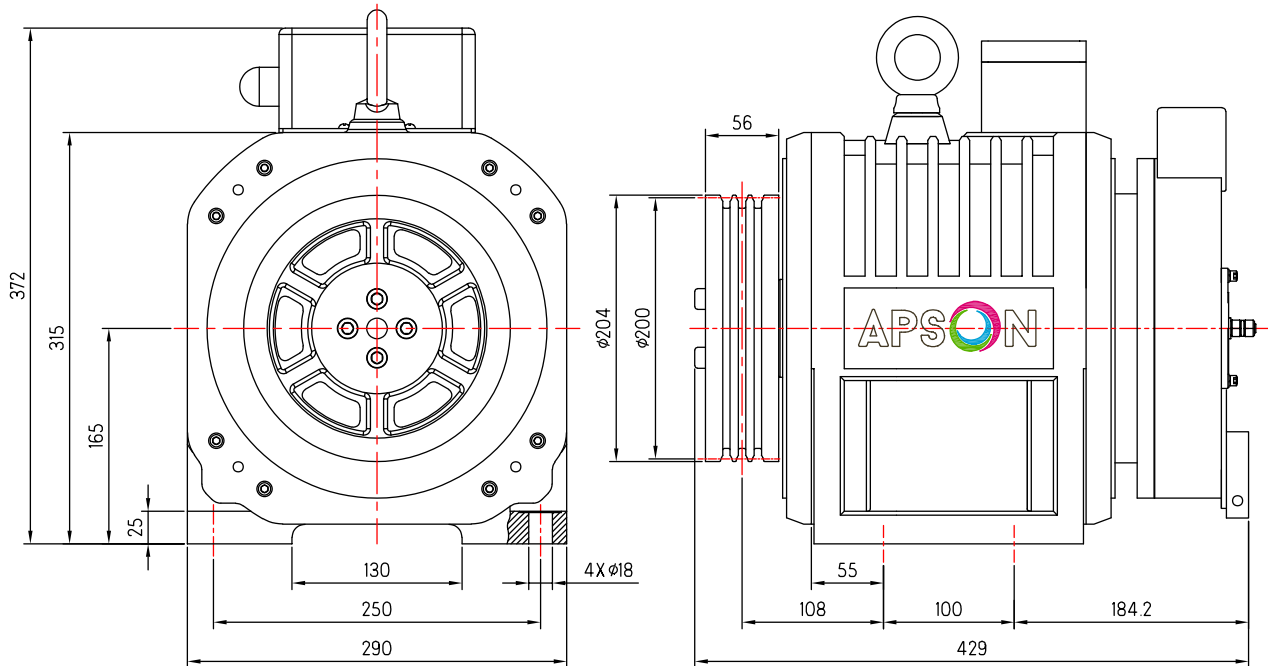


IR SERIES IR300

INNER ROTOR PERMANENT MAGNET SYNCHRONOUS ELEVATOR GEARLESS TRACTION MACHINE

ROPING	2:1
BALANCING	50%
DUTY CYCLE	S5-40%
STARTS / HOUR	180 ST/H
GROOVE TYPE	UNDERCUT "U"
IP PROTECTION	IP41
POLE	24
STATIC LOAD	3000 kg
MACHINE WEIGHT	150 kg*
BRAKE VOLTAGE	DC110V
INSULATION CLASS	F / H
GROOVE β'	90°
GROOVE γ	30°
WARRANTY	7 YEAR*

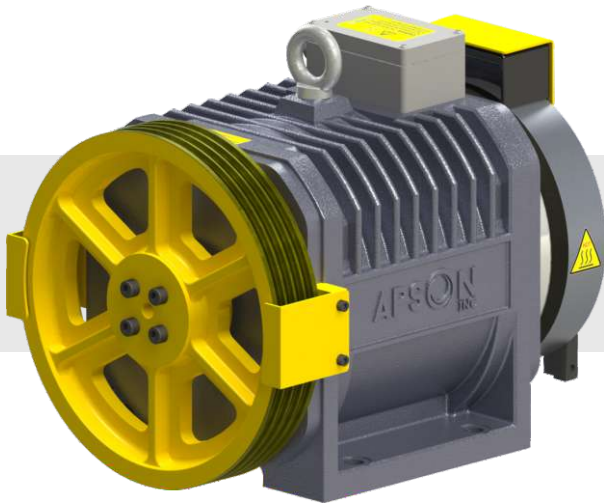




SPECIFICATION SHEET

MODEL	RATED VOLTAGE	CAPACITY	CABIN SPEED	RATED OUTPUT POWER	RATED CURRENT	RATED SPEED	FREQ.	SHEAVE DIA.	TORQUE	GROOVE DETAILS
	V	kg	m/s	kW	A	rpm	Hz	mm	N.m.	
IR300	AC220	300	0.50	1.00	6.00	95	19.1	Ø200	100	4 × Ø8 × 12
IR300	AC220	300	1.00	2.00	10.0	191	38.2	Ø200	100	4 × Ø8 × 12
IR300	AC380	300	0.50	1.00	3.00	95	19.1	Ø200	100	4 × Ø8 × 12
IR300	AC380	300	1.00	2.00	6.00	191	38.2	Ø200	100	4 × Ø8 × 12



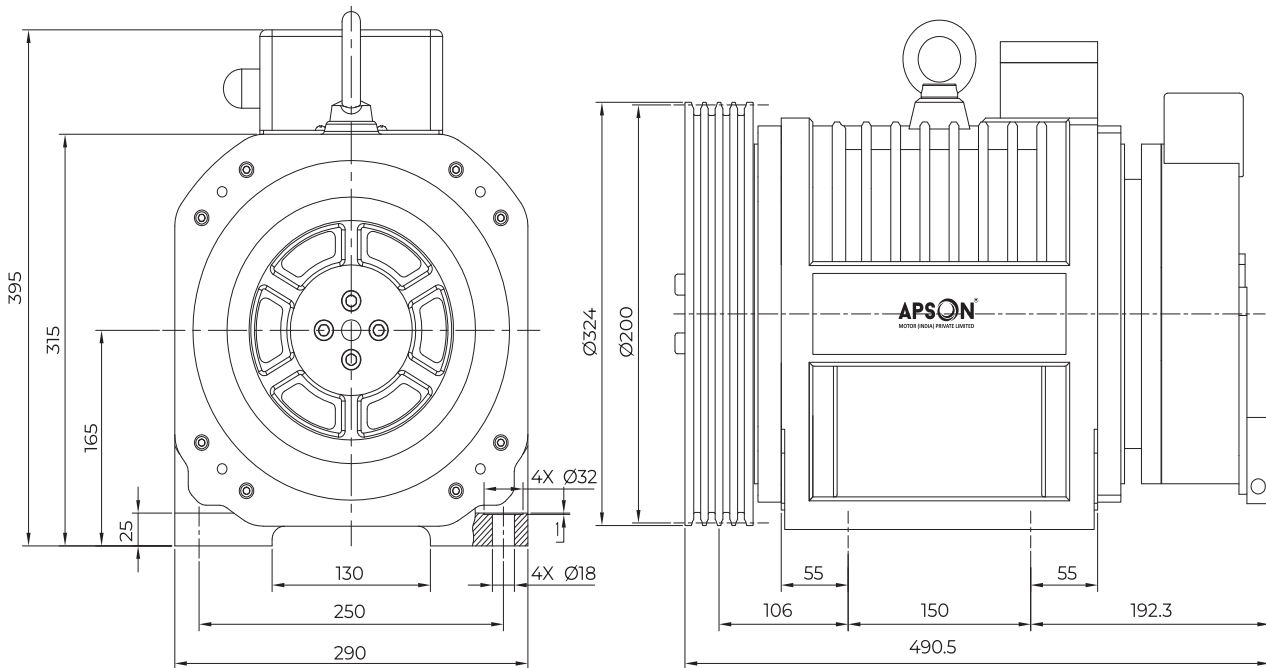


IR SERIES IR450

INNER ROTOR PERMANENT MAGNET SYNCHRONOUS ELEVATOR GEARLESS TRACTION MACHINE

ROPING	2:1
BALANCING	50%
DUTY CYCLE	S5-40%
STARTS / HOUR	240 ST/H
GROOVE TYPE	UNDERCUT "U"
IP PROTECTION	IP41
POLE	24
STATIC LOAD	3000 kg
MACHINE WEIGHT	180 kg*
BRAKE VOLTAGE	DC110V
INSULATION CLASS	F / H
GROOVE β'	90°
GROOVE γ	30°
WARRANTY	5 YEAR*

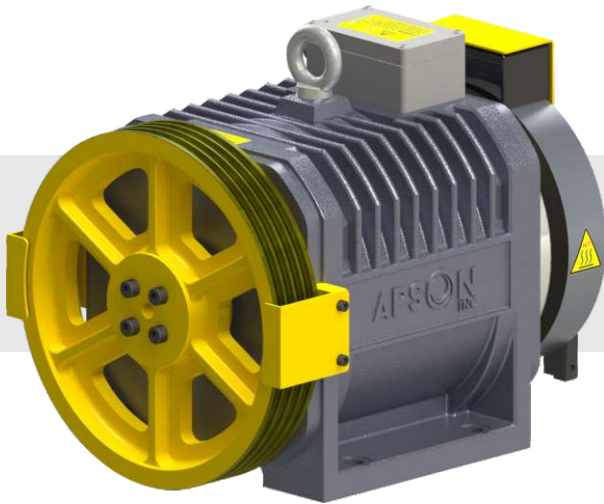




SPECIFICATION SHEET

MODEL	RATED VOLTAGE	CAPACITY	CABIN SPEED	RATED OUTPUT POWER	RATED CURRENT	RATED SPEED	FREQ.	SHEAVE DIA.	TORQUE	GROOVE DETAILS
	V	kg	m/s	kW	A	rpm	Hz	mm	N.m.	
IR450	AC220	450	0.50	1.50	8.00	80	15.9	Ø240	180	4 × Ø8 × 12
IR450	AC220	450	1.00	3.00	14.0	159	31.8	Ø240	180	4 × Ø8 × 12
IR450	AC380	450	0.50	1.50	5.00	80	15.9	Ø240	180	4 × Ø8 × 12
IR450	AC380	450	1.00	3.00	8.00	159	31.8	Ø240	180	4 × Ø8 × 12
IR450	AC380	450	1.25	3.80	10.0	199	39.8	Ø240	180	4 × Ø8 × 12
IR450	AC380	450	1.50	4.50	10.0	239	47.7	Ø240	180	4 × Ø8 × 12
IR450	AC220	450	0.50	1.50	8.00	60	11.9	Ø320	240	4 × Ø8 × 12
IR450	AC220	450	1.00	3.00	14.0	119	23.8	Ø320	240	4 × Ø8 × 12
IR450	AC380	450	0.50	1.50	5.00	60	11.9	Ø320	240	4 × Ø8 × 12
IR450	AC380	450	1.00	3.00	8.00	119	23.9	Ø320	240	4 × Ø8 × 12
IR450	AC380	450	1.25	3.80	10.0	149	29.8	Ø320	240	4 × Ø8 × 12
IR450	AC380	450	1.50	4.50	10.0	179	35.8	Ø320	240	4 × Ø8 × 12



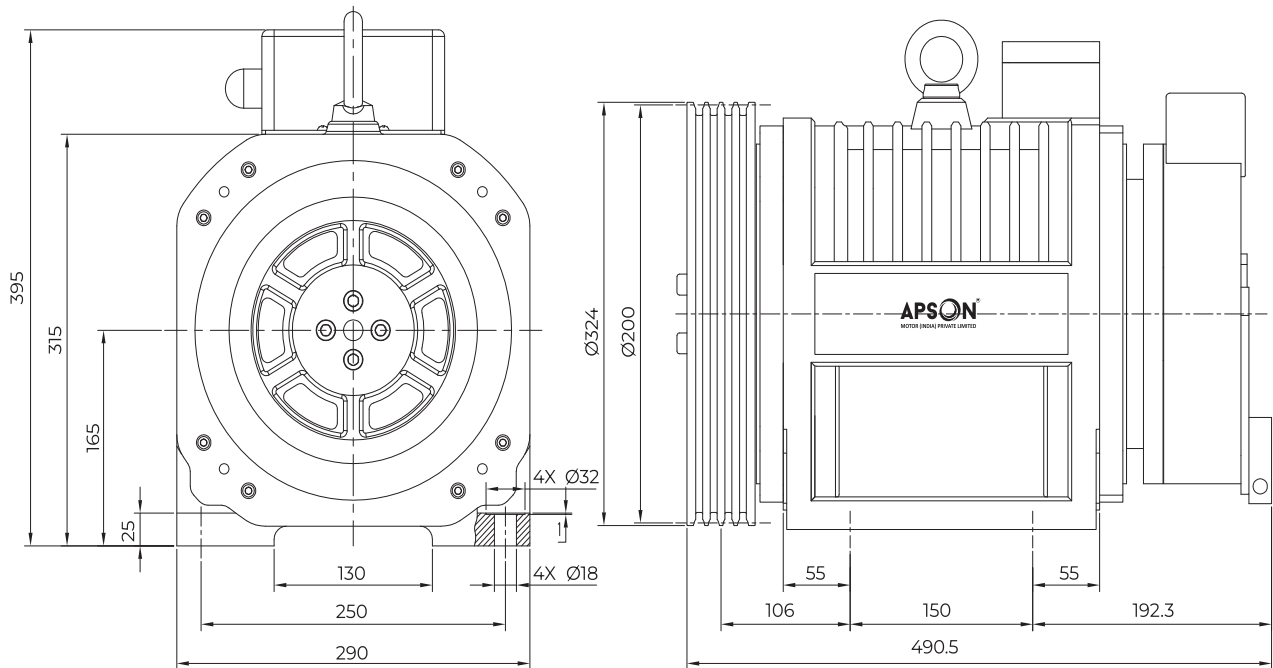


IR SERIES IR544

INNER ROTOR PERMANENT MAGNET SYNCHRONOUS ELEVATOR GEARLESS TRACTION MACHINE

ROPING	2:1
BALANCING	50%
DUTY CYCLE	S5-40%
STARTS / HOUR	240 ST/H
GROOVE TYPE	UNDERCUT "U"
IP PROTECTION	IP41
POLE	24
STATIC LOAD	3000 kg
MACHINE WEIGHT	180 kg*
BRAKE VOLTAGE	DC110V
INSULATION CLASS	F / H
GROOVE β'	90°
GROOVE γ	30°
WARRANTY	5 YEAR*

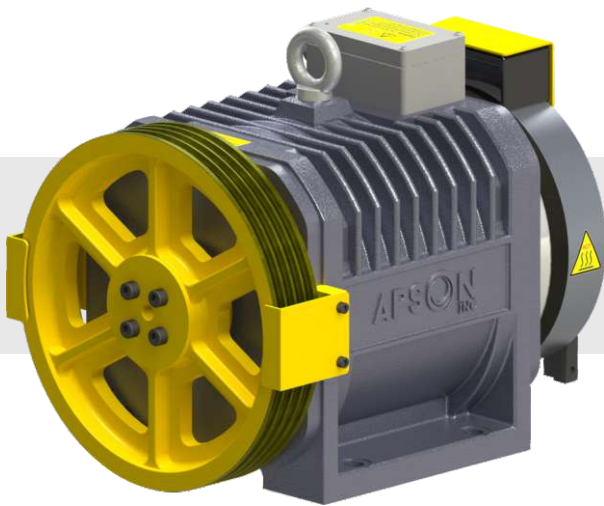




SPECIFICATION SHEET

MODEL	RATED VOLTAGE	CAPACITY	CABIN SPEED	RATED OUTPUT POWER	RATED CURRENT	RATED SPEED	FREQ.	SHEAVE DIA.	TORQUE	GROOVE DETAILS
	V	kg	m/s	kW	A	rpm	Hz	mm	N.m.	
IR544	AC380	544	0.50	2.00	7.00	80	15.9	Ø240	218	4 × Ø8 × 12
IR544	AC380	544	1.00	3.70	9.00	159	31.8	Ø240	218	4 × Ø8 × 12
IR544	AC380	544	1.25	4.50	13.00	199	39.8	Ø240	218	4 × Ø8 × 12
IR544	AC380	544	1.50	5.60	17.00	239	47.7	Ø240	218	4 × Ø8 × 12
IR544	AC380	544	0.50	2.00	7.00	60	11.9	Ø320	300	4 × Ø8 × 12
IR544	AC380	544	1.00	3.70	9.00	119	23.8	Ø320	300	4 × Ø8 × 12
IR544	AC380	544	1.25	4.50	13.00	149	29.8	Ø320	300	4 × Ø8 × 12
IR544	AC380	544	1.50	5.60	13.00	179	35.8	Ø320	300	4 × Ø8 × 12



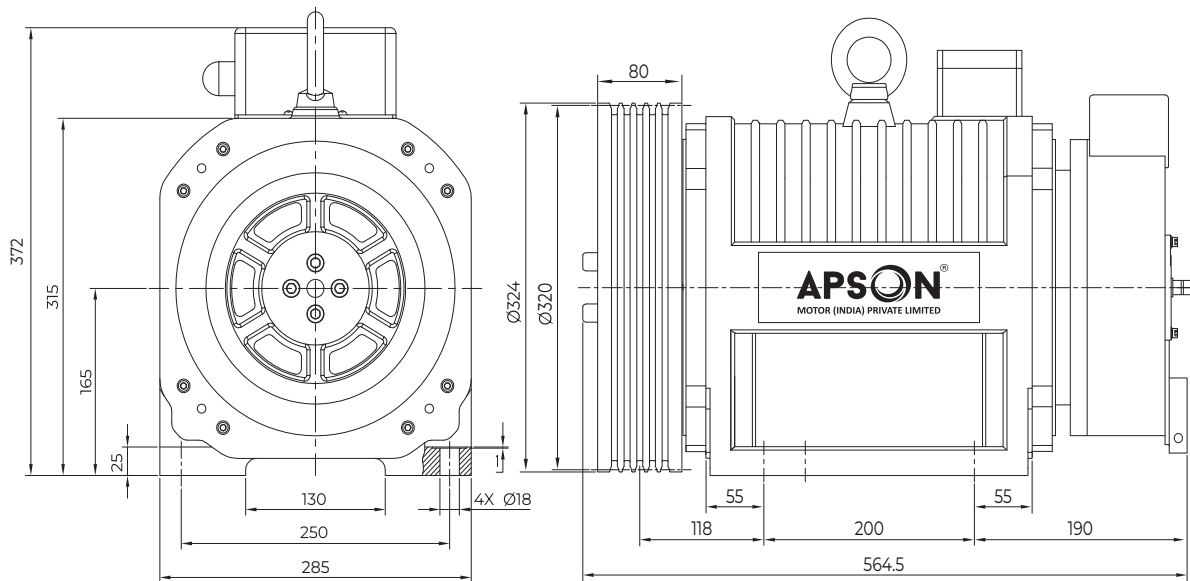


IR SERIES IR630-680

INNER ROTOR PERMANENT MAGNET SYNCHRONOUS ELEVATOR GEARLESS TRACTION MACHINE

ROPING	2:1
BALANCING	50%
DUTY CYCLE	S5-40%
STARTS / HOUR	240 ST/H
GROOVE TYPE	UNDERCUT "U"
IP PROTECTION	IP41
POLE	24
STATIC LOAD	3000 kg
MACHINE WEIGHT	225 kg*
BRAKE VOLTAGE	DC110V
INSULATION CLASS	F / H
GROOVE β'	90°
GROOVE γ	30°
WARRANTY	5 YEAR*

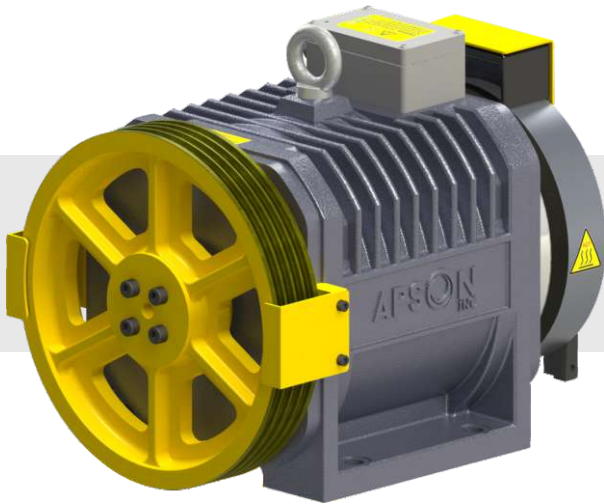




SPECIFICATION SHEET

MODEL	RATED VOLTAGE	CAPACITY	CABIN SPEED	RATED OUTPUT POWER	RATED CURRENT	RATED SPEED	FREQ.	SHEAVE DIA.	TORQUE	GROOVE DETAILS
	V	kg	m/s	kW	A	rpm	Hz	mm	N.m.	
IR630	AC380	630	0.50	2.10	7.00	60	11.9	Ø320	336	5 × Ø8 × 12
IR630	AC380	630	1.00	4.20	14.0	119	23.9	Ø320	336	5 × Ø8 × 12
IR630	AC380	630	1.25	5.30	14.0	149	29.8	Ø320	336	5 × Ø8 × 12
IR630	AC380	630	1.50	6.30	19.0	179	35.8	Ø320	336	5 × Ø8 × 12
IR630	AC380	630	1.75	7.40	19.0	209	41.8	Ø320	336	5 × Ø8 × 12
IR630	AC380	630	2.00	8.40	22.0	239	47.7	Ø320	336	5 × Ø8 × 12
IR680	AC380	680	0.50	2.30	7.00	60	11.9	Ø320	363	5 × Ø8 × 12
IR680	AC380	680	1.00	4.50	14.0	119	23.8	Ø320	363	5 × Ø8 × 12
IR680	AC380	680	1.25	5.70	14.0	149	29.8	Ø320	363	5 × Ø8 × 12
IR680	AC380	680	1.50	6.80	19.0	179	35.8	Ø320	363	5 × Ø8 × 12
IR680	AC380	680	1.75	7.90	19.0	209	41.8	Ø320	363	5 × Ø8 × 12
IR680	AC380	680	2.00	9.10	22.0	239	47.7	Ø320	363	5 × Ø8 × 12



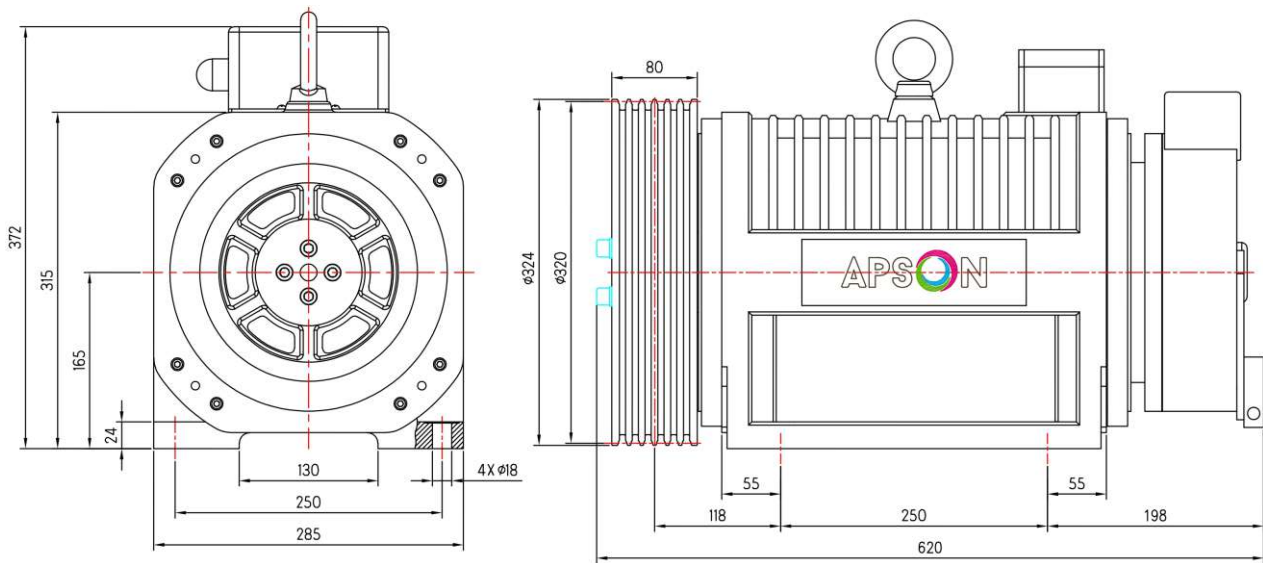


IR SERIES IR800-884

INNER ROTOR PERMANENT MAGNET SYNCHRONOUS ELEVATOR GEARLESS TRACTION MACHINE

ROPING	2:1
BALANCING	50%
DUTY CYCLE	S5-40%
STARTS / HOUR	240 ST/H
GROOVE TYPE	UNDERCUT "U"
IP PROTECTION	IP41
POLE	24
STATIC LOAD	3000 kg
MACHINE WEIGHT	250 kg*
BRAKE VOLTAGE	DC110V
INSULATION CLASS	F / H
GROOVE β'	90°
GROOVE γ	30°
WARRANTY	5 YEAR*





SPECIFICATION SHEET

MODEL	RATED VOLTAGE	CAPACITY	CABIN SPEED	RATED OUTPUT POWER	RATED CURRENT	RATED SPEED	FREQ.	SHEAVE DIA.	TORQUE	GROOVE DETAILS
	V	kg	m/s	kW	A	rpm	Hz	mm	N.m.	
IR800	AC380	800	0.50	2.40	8.00	60	11.9	Ø320	400	6 × Ø8 × 12
IR800	AC380	800	1.00	4.80	15.0	119	23.9	Ø320	400	6 × Ø8 × 12
IR800	AC380	800	1.25	6.00	15.0	149	29.8	Ø320	400	6 × Ø8 × 12
IR800	AC380	800	1.50	7.20	20.0	179	35.8	Ø320	400	6 × Ø8 × 12
IR800	AC380	800	1.75	8.40	20.0	209	41.8	Ø320	400	6 × Ø8 × 12
IR800	AC380	800	2.00	9.60	23.0	239	47.7	Ø320	400	6 × Ø8 × 12
IR884	AC380	884	0.50	2.60	8.00	60	11.9	Ø320	424	6 × Ø8 × 12
IR884	AC380	884	1.00	5.30	16.0	119	23.8	Ø320	424	6 × Ø8 × 12
IR884	AC380	884	1.25	6.60	16.0	149	29.8	Ø320	424	6 × Ø8 × 12
IR884	AC380	884	1.50	7.90	21.0	179	35.8	Ø320	424	6 × Ø8 × 12
IR884	AC380	884	1.75	9.30	21.0	209	41.8	Ø320	424	6 × Ø8 × 12
IR884	AC380	884	2.00	10.6	24.0	239	47.7	Ø320	424	6 × Ø8 × 12



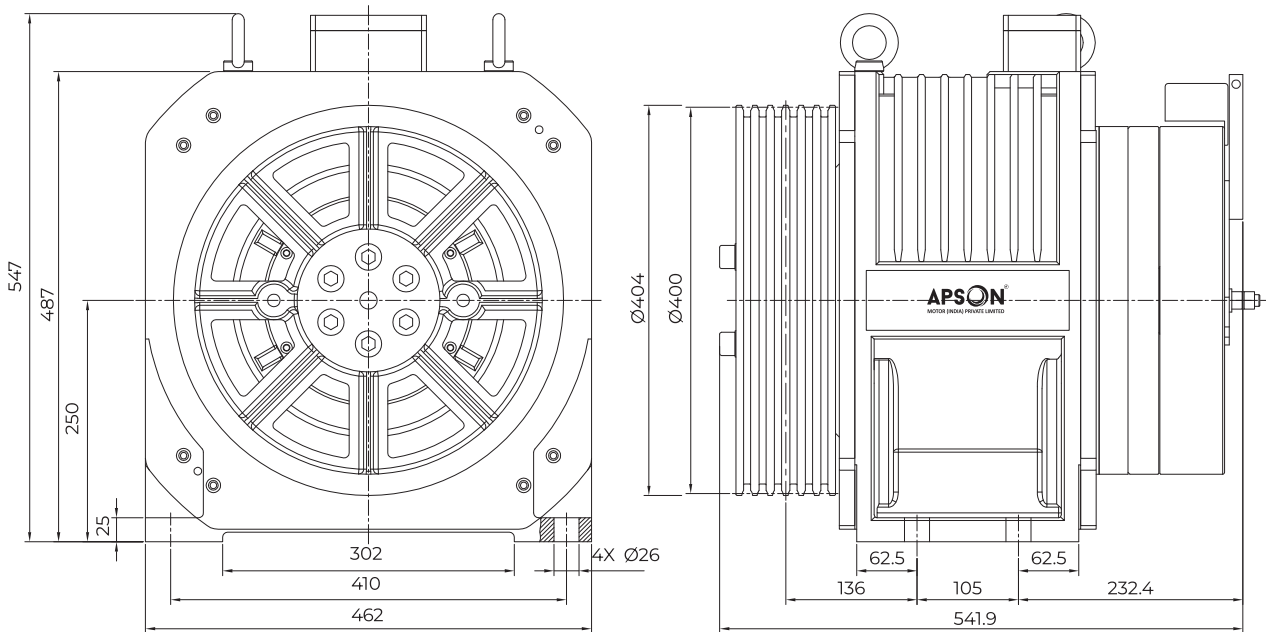


IR SERIES IR975-1200

INNER ROTOR PERMANENT MAGNET SYNCHRONOUS ELEVATOR GEARLESS TRACTION MACHINE

ROPING	2:1
BALANCING	50%
DUTY CYCLE	S5-40%
STARTS / HOUR	240 ST/H
GROOVE TYPE	UNDERCUT "U"
IP PROTECTION	IP41
POLE	32
STATIC LOAD	4500 kg
MACHINE WEIGHT	450 kg*
BRAKE VOLTAGE	DC110V
INSULATION CLASS	F / H
GROOVE β'	90°
GROOVE γ	30°
WARRANTY	5 YEAR*

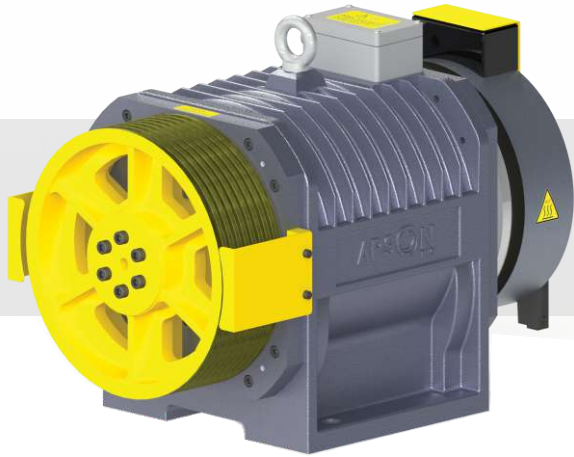




SPECIFICATION SHEET

MODEL	RATED VOLTAGE	CAPACITY	CABIN SPEED	RATED OUTPUT POWER	RATED CURRENT	RATED SPEED	FREQ.	SHEAVE DIA.	TORQUE	GROOVE DETAILS
	V	kg	m/s	kW	A	rpm	Hz	mm	N.m.	
IR975	AC380	975	1.00	6.50	18.0	95	25.5	Ø400	650	6 × Ø10 × 16
IR975	AC380	975	1.25	8.10	18.0	119	31.8	Ø400	650	6 × Ø10 × 16
IR975	AC380	975	1.50	9.80	24.0	143	38.2	Ø400	650	6 × Ø10 × 16
IR975	AC380	975	1.75	11.4	24.0	167	44.6	Ø400	650	6 × Ø10 × 16
IR975	AC380	975	2.00	13.0	28.0	191	50.9	Ø400	650	6 × Ø10 × 16
IR975	AC380	975	2.50	16.3	35.0	239	63.7	Ø400	650	6 × Ø10 × 16
IR1200	AC380	1200	1.00	8.00	22.0	95	25.5	Ø400	800	6 × Ø10 × 16
IR1200	AC380	1200	1.25	10.0	22.0	119	31.8	Ø400	800	6 × Ø10 × 16
IR1200	AC380	1200	1.50	12.0	30.0	143	38.2	Ø400	800	6 × Ø10 × 16
IR1200	AC380	1200	1.75	14.0	30.0	167	44.6	Ø400	800	6 × Ø10 × 16
IR1200	AC380	1200	2.00	16.0	34.0	191	50.9	Ø400	800	6 × Ø10 × 16
IR1200	AC380	1200	2.50	20.0	43.0	239	63.7	Ø400	800	6 × Ø10 × 16



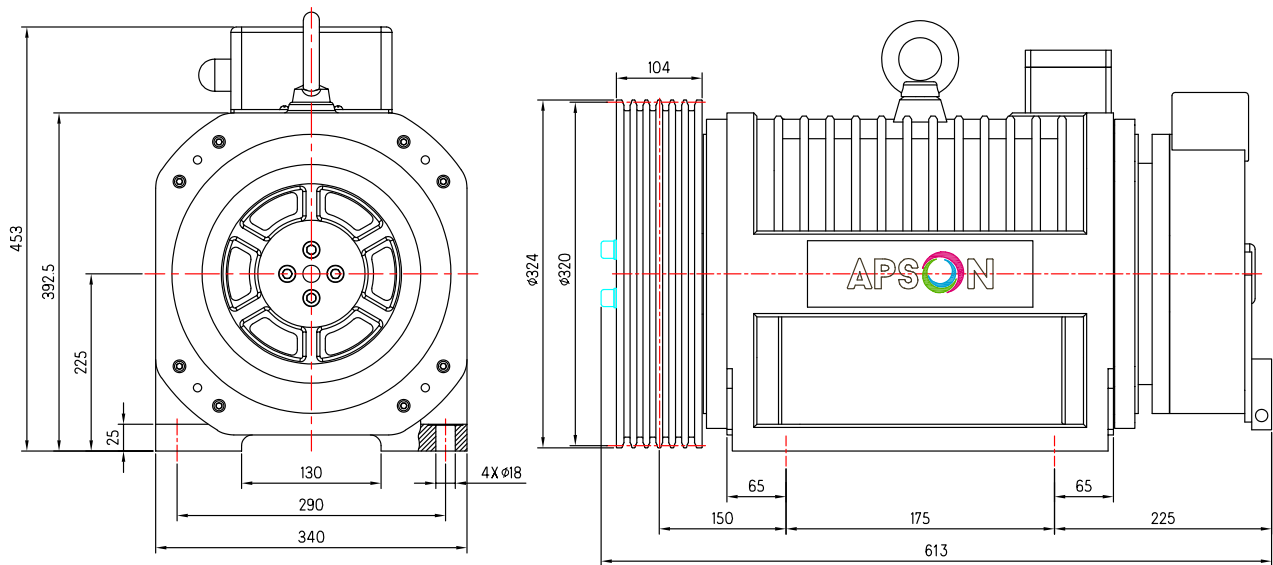


IR SERIES IR1088-1360

INNER ROTOR PERMANENT MAGNET SYNCHRONOUS ELEVATOR GEARLESS TRACTION MACHINE

ROPING	2:1
BALANCING	50%
DUTY CYCLE	S5-40%
STARTS / HOUR	240 ST/H
GROOVE TYPE	UNDERCUT "U"
IP PROTECTION	IP41
POLE	24
STATIC LOAD	4500 kg
MACHINE WEIGHT	300 kg*
BRAKE VOLTAGE	DC110V
INSULATION CLASS	F / H
GROOVE β'	90°
GROOVE γ	30°
WARRANTY	5 YEAR*





SPECIFICATION SHEET

MODEL	RATED VOLTAGE	CAPACITY	CABIN SPEED	RATED OUTPUT POWER	RATED CURRENT	RATED SPEED	FREQ.	SHEAVE DIA.	TORQUE	GROOVE DETAILS
	V	kg	m/s	kW	A	rpm	Hz	mm	N.m.	
IR1088	AC380	1088	0.50	3.30	8.00	60	11.9	Ø320	522	8 × Ø8 × 12
IR1088	AC380	1088	1.00	6.50	19.0	119	23.8	Ø320	522	8 × Ø8 × 12
IR1088	AC380	1088	1.25	8.20	19.0	149	29.8	Ø320	522	8 × Ø8 × 12
IR1088	AC380	1088	1.50	9.80	27.0	179	35.8	Ø320	522	8 × Ø8 × 12
IR1088	AC380	1088	1.75	11.4	27.0	209	41.8	Ø320	522	8 × Ø8 × 12
IR1088	AC380	1088	2.00	13.0	31.0	239	47.7	Ø320	522	8 × Ø8 × 12
IR1088	AC380	1088	2.50	16.3	39.0	298	59.7	Ø320	522	8 × Ø8 × 12
IR1360	AC380	1360	0.50	4.10	11.0	60	11.9	Ø320	652	8 × Ø8 × 12
IR1360	AC380	1360	1.00	8.20	22.0	119	23.8	Ø320	652	8 × Ø8 × 12
IR1360	AC380	1360	1.25	10.2	28.0	149	29.8	Ø320	652	8 × Ø8 × 12
IR1360	AC380	1360	1.50	12.2	30.0	179	35.8	Ø320	652	8 × Ø8 × 12
IR1360	AC380	1360	2.00	16.3	40.0	239	47.7	Ø320	652	8 × Ø8 × 12



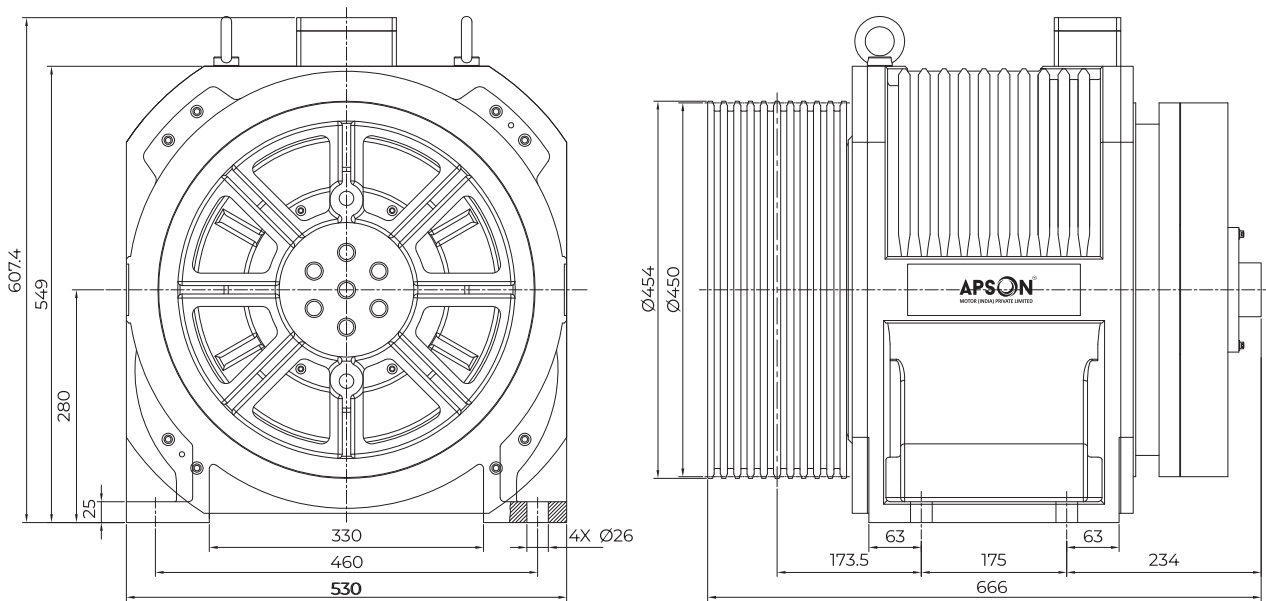


IR SERIES IR1500-2175

INNER ROTOR PERMANENT MAGNET SYNCHRONOUS ELEVATOR GEARLESS TRACTION MACHINE

ROPING	2:1
BALANCING	50%
DUTY CYCLE	S5-40%
STARTS / HOUR	240 ST/H
GROOVE TYPE	UNDERCUT "U"
IP PROTECTION	IP41
POLE	32
STATIC LOAD	6000 kg
MACHINE WEIGHT	600 kg*
BRAKE VOLTAGE	DC110V
INSULATION CLASS	F / H
GROOVE β'	90°
GROOVE γ	30°
WARRANTY	5 YEAR*

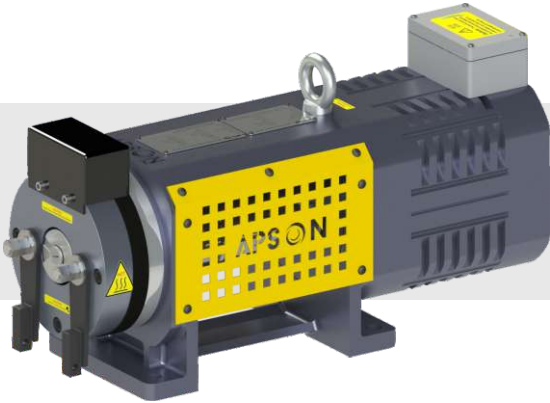




SPECIFICATION SHEET

MODEL	RATED VOLTAGE	CAPACITY	CABIN SPEED	RATED OUTPUT POWER	RATED CURRENT	RATED SPEED	FREQ.	SHEAVE DIA.	TORQUE	GROOVE DETAILS
	V	kg	m/s	kW	A	rpm	Hz	mm	N.m.	
IR1500	AC380	1500	1.00	9.80	25.0	85	22.6	Ø450	1103	10 × Ø10 × 16
IR1500	AC380	1500	1.25	12.3	25.0	106	28.3	Ø450	1103	10 × Ø10 × 16
IR1500	AC380	1500	1.50	14.7	34.0	127	34.0	Ø450	1103	10 × Ø10 × 16
IR1500	AC380	1500	1.75	17.2	34.0	149	39.6	Ø450	1103	10 × Ø10 × 16
IR1500	AC380	1500	2.00	19.6	40.0	170	45.3	Ø450	1103	10 × Ø10 × 16
IR1500	AC380	1500	2.50	24.5	51.0	212	56.6	Ø450	1103	10 × Ø10 × 16
IR2175	AC380	2175	1.00	14.2	36.0	85	22.6	Ø450	1600	10 × Ø10 × 16
IR2175	AC380	2175	1.25	17.8	36.0	106	28.3	Ø450	1600	10 × Ø10 × 16
IR2175	AC380	2175	1.50	21.3	50.0	127	34.0	Ø450	1600	10 × Ø10 × 16
IR2175	AC380	2175	1.75	24.9	50.0	149	39.6	Ø450	1600	10 × Ø10 × 16
IR2175	AC380	2175	2.00	28.5	58.0	170	45.3	Ø450	1600	10 × Ø10 × 16
IR2175	AC380	2175	2.50	35.6	74.0	212	56.6	Ø450	1600	10 × Ø10 × 16



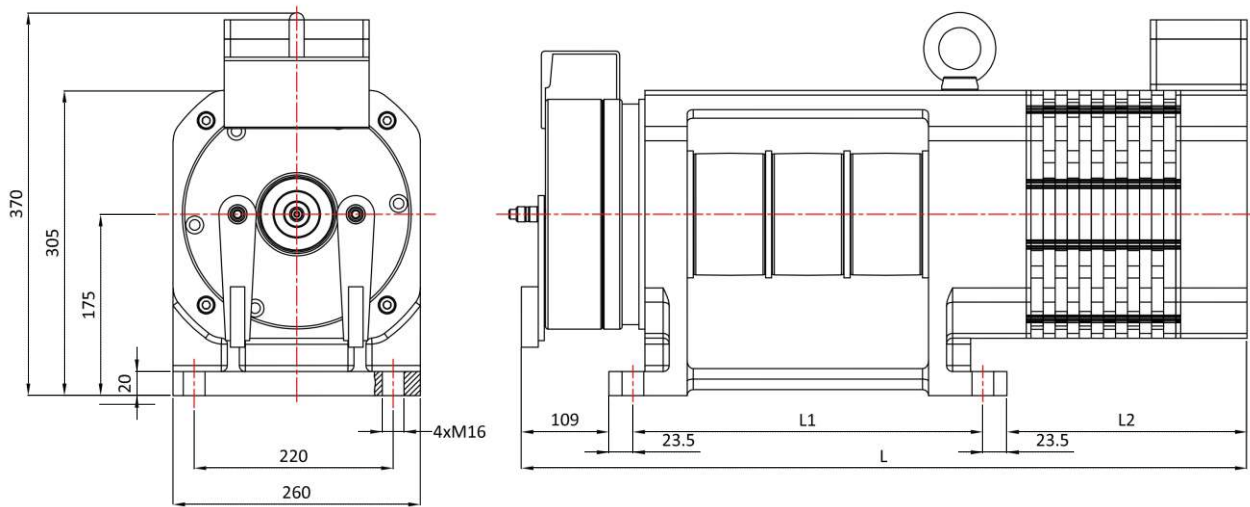


BELT DRIVE SERIES BD450-1088

BELT DRIVE PERMANENT MAGNET SYNCHRONOUS ELEVATOR GEARLESS TRACTION MACHINE

ROPING	2:1
BALANCING	50%
DUTY CYCLE	S5-40%
STARTS / HOUR	180 ST/H
GROOVE TYPE	TAPPER
IP PROTECTION	IP41
POLE	24
STATIC LOAD	250 kg
MACHINE WEIGHT	150 kg*
BRAKE VOLTAGE	DC110V
INSULATION CLASS	F / H
GROOVE β'	N/A
GROOVE γ	N/A
WARRANTY	5 YEAR*





SPECIFICATION SHEET

MODEL	RATED VOLTAGE	CAPACITY kg	CABIN SPEED m/s	RATED OUTPUT POWER kW	RATED CURRENT A	RATED SPEED rpm	FREQ. Hz	SHEAVE DIA. mm	TORQUE N.m.	GROOVE DETAILS mm	MACHINE DIMENSION		
	V										L	L1	L2
BD450	AC380	450	0.50	1.50	4.00	191	38.2	Ø100	75	2 x 60	551	280	115
BD450	AC380	450	1.00	3.00	8.00	382	76.4	Ø100	75	2 x 60	551	280	115
BD680	AC380	680	0.50	2.25	7.00	191	38.2	Ø100	100	3 x 60	601	280	165
BD680	AC380	680	1.00	4.50	14.0	382	76.4	Ø100	100	3 x 60	601	280	165
BD1088	AC380	1088	0.50	3.50	8.50	191	38.2	Ø100	173	4 x 60	716	345	215
BD1088	AC380	1088	1.00	6.90	17.0	382	76.4	Ø100	173	4 x 60	716	345	215



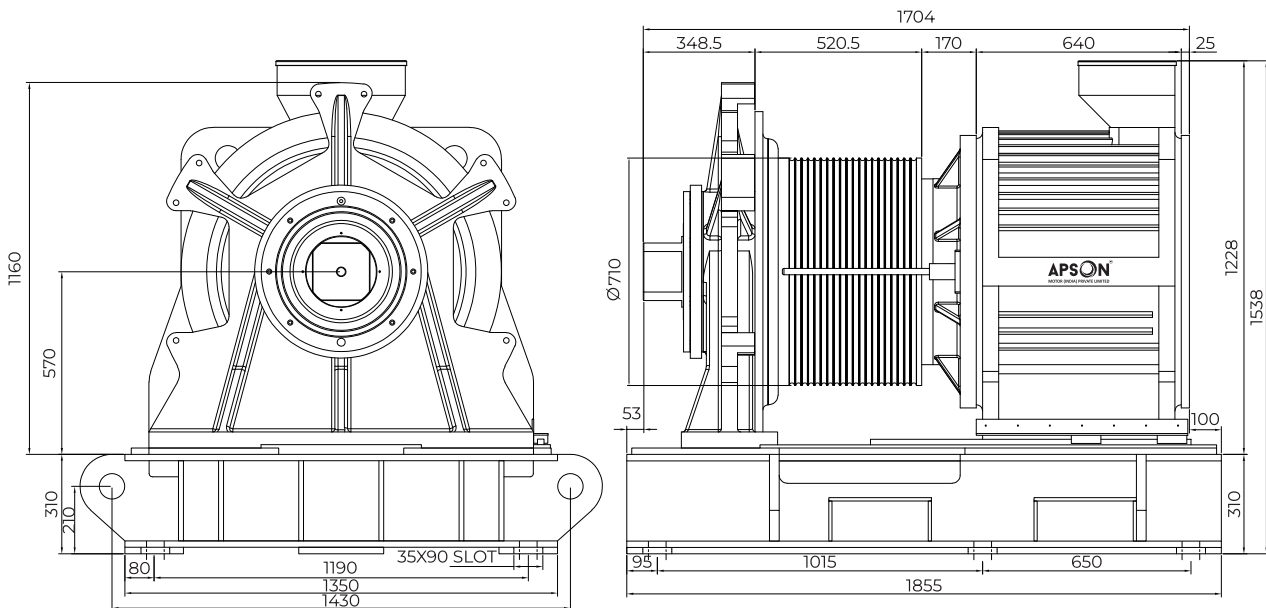


CHETAK by APSON CHH4000-7000

CHETAK PERMANENT MAGNET SYNCHRONOUS ELEVATOR GEARLESS TRACTION MACHINE

ROPING	2:1
BALANCING	50%
DUTY CYCLE	S5-40%
STARTS / HOUR	240 ST/H
GROOVE TYPE	UNDERCUT "U"
IP PROTECTION	IP41
POLE	32
STATIC LOAD	50,000 kg
MACHINE WEIGHT	7000 kg*
BRAKE VOLTAGE	DC110V
INSULATION CLASS	H
GROOVE β'	90°
GROOVE γ	30°
WARRANTY	5 YEAR*





SPECIFICATION SHEET

MODEL	RATED VOLTAGE	CAPACITY	CABIN SPEED	RATED OUTPUT POWER	RATED CURRENT	RATED SPEED	FREQ.	SHEAVE DIA.	TORQUE	GROOVE DETAILS	WRAP
	V	kg	m/s	kW	A	rpm	Hz	mm	N.m.		
CHH4000	AC380	4000	1.00	24.20	57.00	54	14.3	Ø710	4301	10 × Ø16 × 20	SINGLE
CHH4000	AC380	4000	2.00	48.50	108.0	108	28.7	Ø710	4301	10 × Ø16 × 20	SINGLE
CHH4000	AC380	4000	3.00	72.70	155.0	161	43.0	Ø710	4301	10 × Ø16 × 20	DOUBLE
CHH5000	AC380	5000	1.00	30.10	71.00	54	14.3	Ø710	5337	10 × Ø16 × 20	SINGLE
CHH5000	AC380	5000	2.00	60.10	134.0	108	28.7	Ø710	5337	10 × Ø16 × 20	SINGLE
CHH5000	AC380	5000	3.00	90.20	193.0	161	43.0	Ø710	5337	10 × Ø16 × 20	DOUBLE
CHH7000	AC380	7000	1.00	40.40	99.00	54	14.3	Ø710	7163	10 × Ø16 × 20	SINGLE
CHH7000	AC380	7000	2.00	80.70	198.0	108	28.7	Ø710	7163	10 × Ø16 × 20	SINGLE
CHH7000	AC380	7000	3.00	121.1	297.0	161	43.0	Ø710	7163	10 × Ø16 × 20	DOUBLE



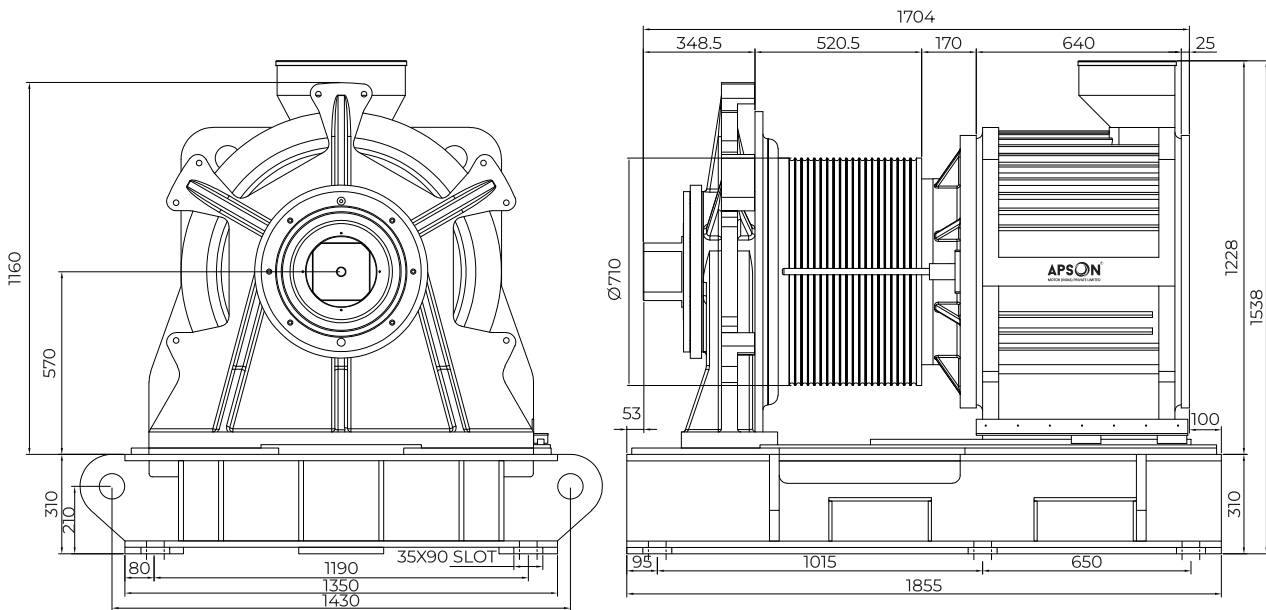


CHETAK by APSON CHS2200

CHETAK PERMANENT MAGNET SYNCHRONOUS ELEVATOR GEARLESS TRACTION MACHINE

ROPING	2:1
BALANCING	50%
DUTY CYCLE	S5-40%
STARTS / HOUR	240 ST/H
GROOVE TYPE	"U"
IP PROTECTION	IP41
POLE	32
STATIC LOAD	50,000 kg
MACHINE WEIGHT	7000 kg*
BRAKE VOLTAGE	DC110V
INSULATION CLASS	H
GROOVE β'	N/A
GROOVE γ	25°
WARRANTY	5 YEAR*





SPECIFICATION SHEET

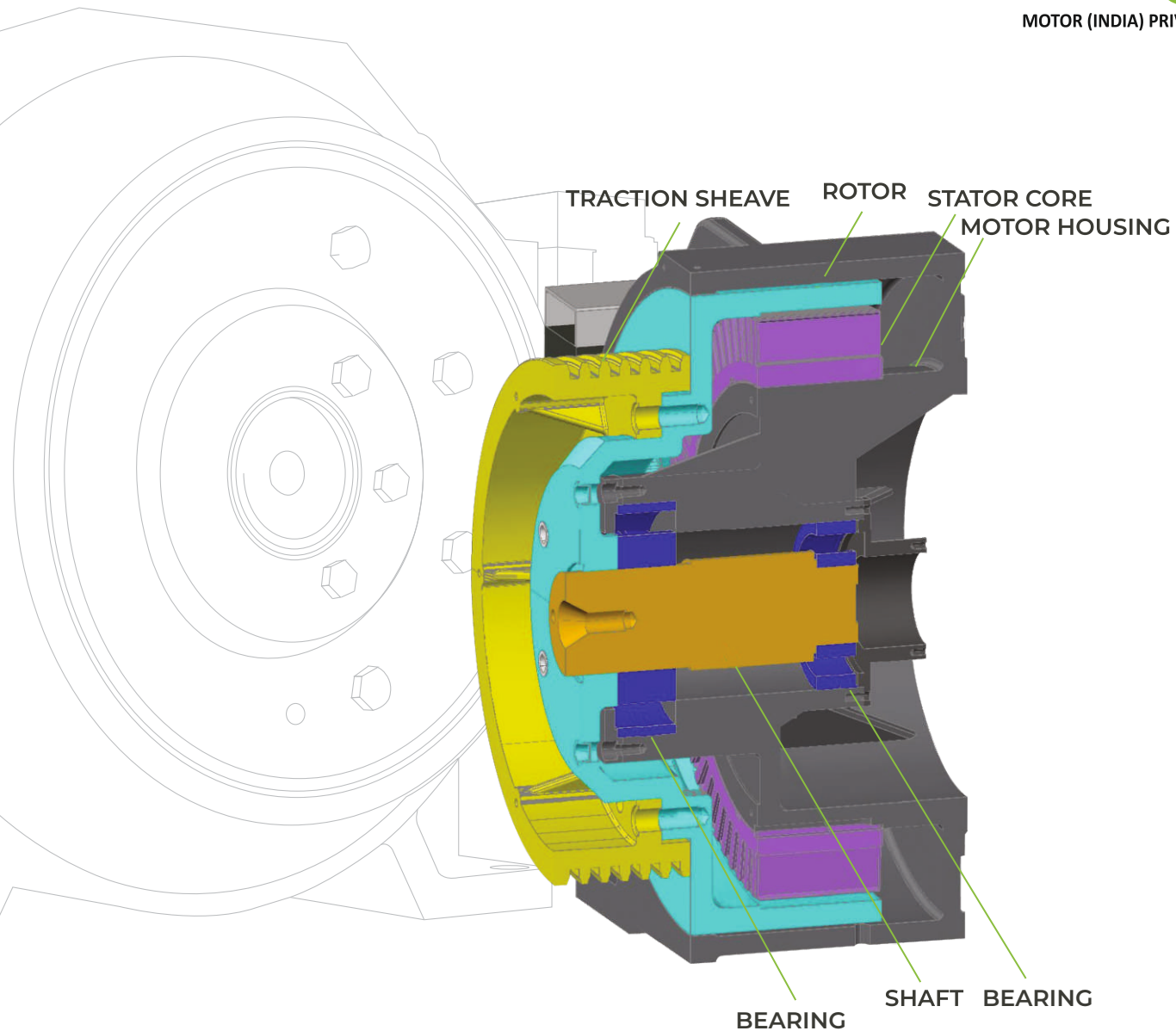
MODEL	RATED VOLTAGE	CAPACITY	CABIN SPEED	RATED OUTPUT POWER	RATED CURRENT	RATED SPEED	FREQ.	SHEAVE DIA.	TORQUE	GROOVE DETAILS	WRAP
	V	kg	m/s	kW	A	rpm	Hz	mm	N.m.		
CHS-0500	AC380	2200	5.00	65.10	220.0	134	35.9	Ø710	4620	10 × Ø16 × 20	DOUBLE
CHS-0600	AC380	2200	6.00	78.10	220.0	161	43.0	Ø710	4620	10 × Ø16 × 20	DOUBLE
CHS-0800	AC380	2200	8.00	104.1	220.0	215	57.4	Ø710	4620	10 × Ø16 × 20	DOUBLE
CHS-1000	AC380	2200	10.0	130.1	320.0	269	71.7	Ø710	4620	10 × Ø16 × 20	DOUBLE
CHS-1200	AC380	2200	12.0	156.2	320.0	323	86.1	Ø710	4620	10 × Ø16 × 20	DOUBLE





**OUTER ROTOR
GEARLESS TRACTION
MACHINE**





OUTER ROTOR GEARLESS TRACTION MACHINE

Outer rotor gearless traction machines are more suitable for machine room as well as machine room less application.

It has shorter shaft load area compared to inner rotor machine but also has higher capacity bearing which is also more suitable for higher static load of the machine. Due to the bigger traction sheave diameter, it has more torque capacity compared to inner rotor elevator gearless traction machine.

In outer rotor technology, electromagnetic shoe / block brake is being used, which operates on rotor to stop the machine with lowest air gap as well as lowest operating noise.



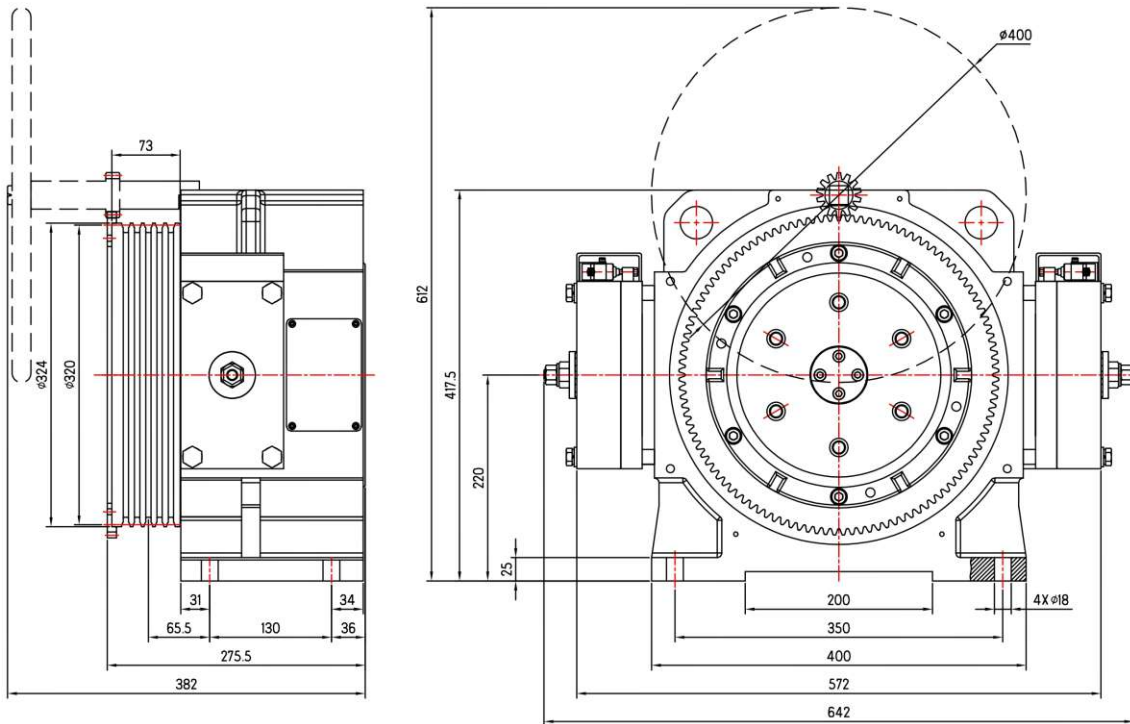


OR SERIES OR450-680

OUTER ROTOR PERMANENT MAGNET SYNCHRONOUS ELEVATOR GEARLESS TRACTION MACHINE

ROPING	2:1
BALANCING	50%
DUTY CYCLE	S5-40%
STARTS / HOUR	240 ST/H
GROOVE TYPE	UNDERCUT "U"
IP PROTECTION	IP41
POLE	24
STATIC LOAD	2500 kg
MACHINE WEIGHT	200 kg*
BRAKE VOLTAGE	DC110V
INSULATION CLASS	F / H
GROOVE β'	90°
GROOVE γ	25°
WARRANTY	5 YEAR*





SPECIFICATION SHEET

MODEL	RATED VOLTAGE	CAPACITY	CABIN SPEED	RATED OUTPUT POWER	RATED CURRENT	RATED SPEED	FREQ.	SHEAVE DIA.	TORQUE	GROOVE DETAILS
	V	kg	m/s	kW	A	rpm	Hz	mm	N.m.	
OR450	AC380	450	0.50	1.50	5.00	60	11.9	Ø320	240	5 × Ø8 × 12
OR450	AC380	450	1.00	3.00	9.00	119	23.9	Ø320	240	5 × Ø8 × 12
OR450	AC380	450	1.25	3.80	9.00	149	29.8	Ø320	240	5 × Ø8 × 12
OR450	AC380	450	1.50	4.50	13.0	179	35.8	Ø320	240	5 × Ø8 × 12
OR630	AC380	630	0.50	2.00	6.00	60	11.9	Ø320	320	5 × Ø8 × 12
OR630	AC380	630	1.00	4.00	12.0	119	23.9	Ø320	320	5 × Ø8 × 12
OR630	AC380	630	1.25	5.00	12.0	149	29.8	Ø320	320	5 × Ø8 × 12
OR630	AC380	630	1.50	6.00	17.0	179	35.8	Ø320	320	5 × Ø8 × 12
OR630	AC380	630	1.75	7.00	17.0	209	41.8	Ø320	320	5 × Ø8 × 12
OR630	AC380	630	2.00	8.20	22.0	239	47.7	Ø320	363	5 × Ø8 × 12
OR680	AC380	680	0.50	2.30	6.00	60	11.9	Ø320	363	5 × Ø8 × 12
OR680	AC380	680	1.00	4.50	12.0	119	23.9	Ø320	363	5 × Ø8 × 12
OR680	AC380	680	1.25	5.70	12.0	149	29.8	Ø320	363	5 × Ø8 × 12
OR680	AC380	680	1.50	6.80	17.0	179	35.8	Ø320	363	5 × Ø8 × 12
OR680	AC380	680	1.75	7.90	17.0	209	41.8	Ø320	363	5 × Ø8 × 12
OR680	AC380	680	2.00	9.10	22.0	239	47.7	Ø320	363	5 × Ø8 × 12



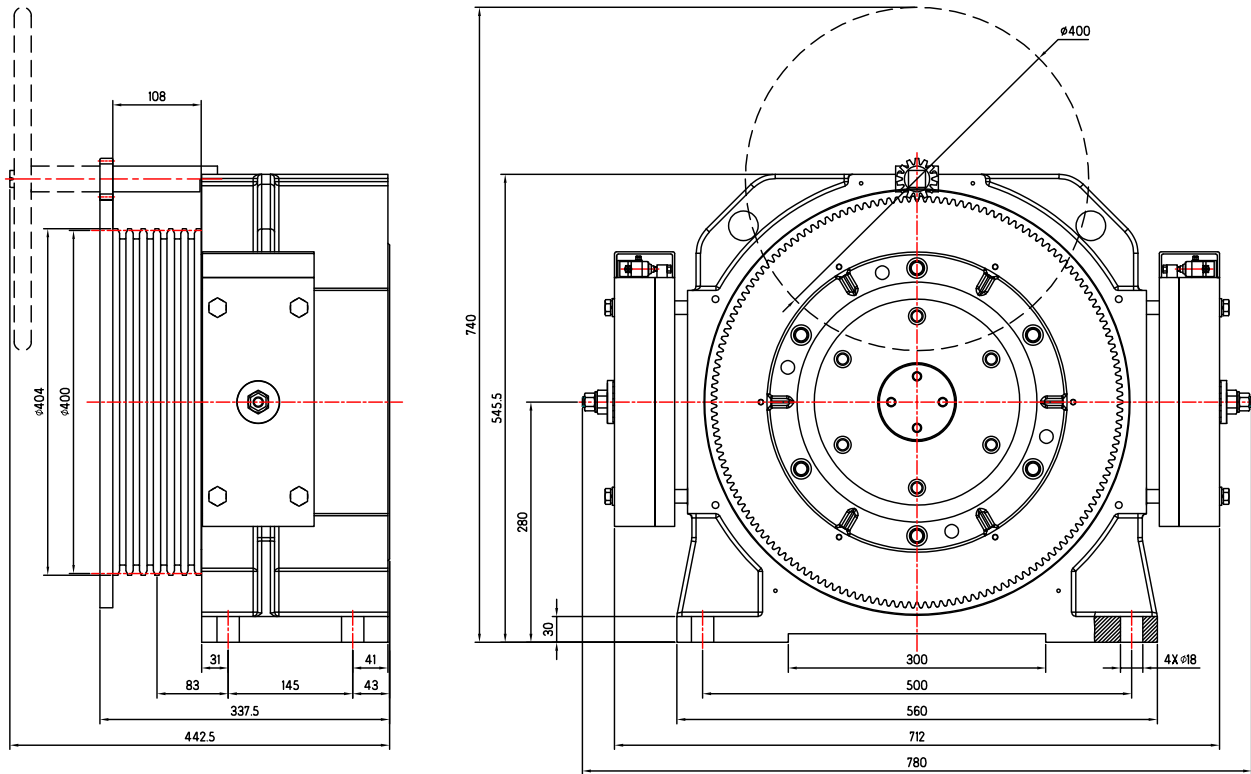


OR SERIES OR1088-1500

OUTER ROTOR PERMANENT MAGNET SYNCHRONOUS ELEVATOR GEARLESS TRACTION MACHINE

ROPING	2:1
BALANCING	50%
DUTY CYCLE	S5-40%
STARTS / HOUR	240 ST/H
GROOVE TYPE	UNDERCUT "U"
IP PROTECTION	IP41
POLE	32
STATIC LOAD	4500 kg
MACHINE WEIGHT	360 kg*
BRAKE VOLTAGE	DC110V
INSULATION CLASS	F / H
GROOVE β'	90°
GROOVE γ	30°
WARRANTY	5 YEAR*

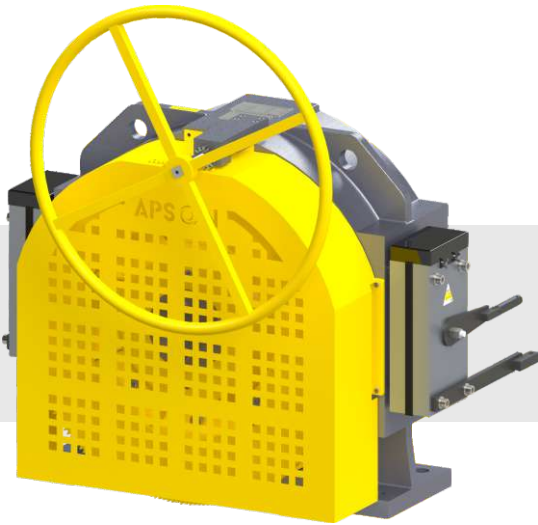




SPECIFICATION SHEET

MODEL	RATED VOLTAGE	CAPACITY	CABIN SPEED	RATED OUTPUT POWER	RATED CURRENT	RATED SPEED	FREQ.	SHEAVE DIA.	TORQUE	GROOVE DETAILS
	V	kg	m/s	kW	A	rpm	Hz	mm	N.m.	
OR1088	AC380	1088	1.00	7.40	17.0	95	25.5	Ø400	740	6 × Ø10 × 16
OR1088	AC380	1088	1.25	9.40	19.0	119	31.8	Ø400	740	6 × Ø10 × 16
OR1088	AC380	1088	1.50	11.1	25.0	143	38.2	Ø400	740	6 × Ø10 × 16
OR1088	AC380	1088	1.75	13.4	27.0	167	44.6	Ø400	740	6 × Ø10 × 16
OR1088	AC380	1088	2.00	15.4	29.0	191	50.9	Ø400	740	6 × Ø10 × 16
OR1088	AC380	1088	2.50	19.4	38.0	239	63.7	Ø400	740	6 × Ø10 × 16
OR1360	AC380	1360	1.00	8.00	22.0	95	25.5	Ø400	800	6 × Ø10 × 16
OR1360	AC380	1360	1.25	10.0	24.0	119	31.8	Ø400	800	6 × Ø10 × 16
OR1360	AC380	1360	1.50	12.0	30.0	143	38.2	Ø400	800	6 × Ø10 × 16
OR1360	AC380	1360	1.75	14.0	32.0	167	44.6	Ø400	800	6 × Ø10 × 16
OR1360	AC380	1360	2.00	16.0	34.0	191	50.9	Ø400	800	6 × Ø10 × 16
OR1360	AC380	1360	2.50	20.0	43.0	239	63.7	Ø400	800	6 × Ø10 × 16
OR1500	AC380	1500	0.50	4.30	12.0	48	12.8	Ø400	865	6 × Ø10 × 16
OR1500	AC380	1500	1.00	8.60	23.0	95	25.5	Ø400	865	6 × Ø10 × 16
OR1500	AC380	1500	1.25	10.8	26.0	119	31.8	Ø400	865	6 × Ø10 × 16
OR1500	AC380	1500	1.50	13.0	32.0	143	38.2	Ø400	865	6 × Ø10 × 16
OR1500	AC380	1500	1.75	15.1	37.0	167	44.6	Ø400	865	6 × Ø10 × 16



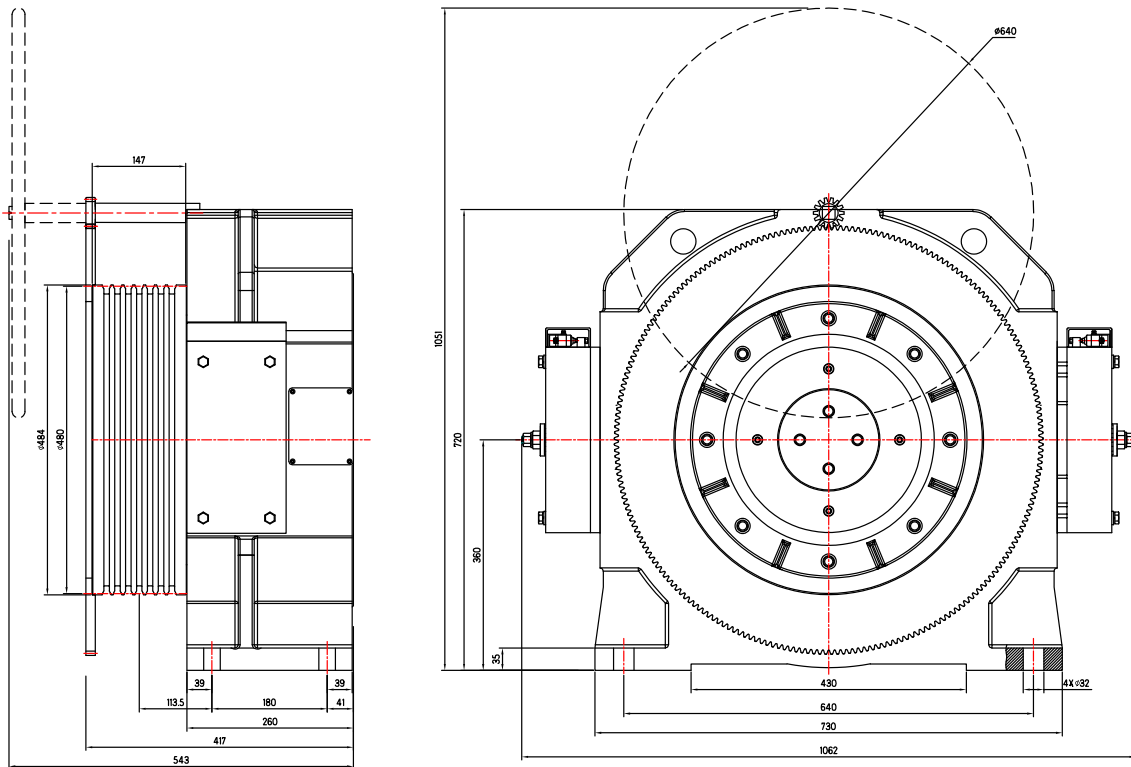


OR SERIES OR1768-2175

OUTER ROTOR PERMANENT MAGNET SYNCHRONOUS ELEVATOR GEARLESS TRACTION MACHINE

ROPING	2:1
BALANCING	50%
DUTY CYCLE	S5-40%
STARTS / HOUR	240 ST/H
GROOVE TYPE	UNDERCUT "U"
IP PROTECTION	IP41
POLE	48
STATIC LOAD	10,000 kg
MACHINE WEIGHT	700 kg*
BRAKE VOLTAGE	DC110V
INSULATION CLASS	F / H
GROOVE β'	90°
GROOVE γ	30°
WARRANTY	5 YEAR*

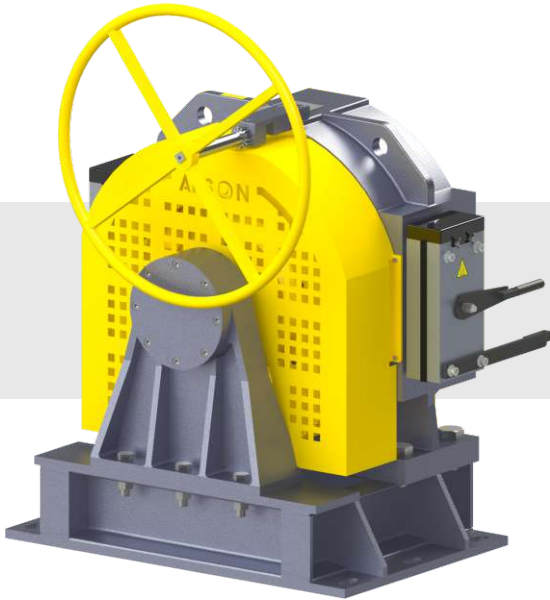




SPECIFICATION SHEET

MODEL	RATED VOLTAGE	CAPACITY	CABIN SPEED	RATED OUTPUT POWER	RATED CURRENT	RATED SPEED	FREQ.	SHEAVE DIA.	TORQUE	GROOVE DETAILS
	V	kg	m/s	kW	A	rpm	Hz	mm	N.m.	
OR1768	AC380	1768	0.50	5.60	14.0	40	15.9	Ø480	1345	9 × Ø10 × 15
OR1768	AC380	1768	1.00	11.2	27.0	80	31.8	Ø480	1345	9 × Ø10 × 15
OR1768	AC380	1768	1.25	14.0	34.0	99	39.8	Ø480	1345	9 × Ø10 × 15
OR1768	AC380	1768	1.50	16.8	41.0	119	47.7	Ø480	1345	9 × Ø10 × 15
OR1768	AC380	1768	1.75	19.6	48.0	139	55.7	Ø480	1345	9 × Ø10 × 15
OR1768	AC380	1768	2.00	22.4	55.0	159	63.7	Ø480	1345	9 × Ø10 × 15
OR1768	AC380	1768	2.50	28.0	69.0	199	79.6	Ø480	1345	9 × Ø10 × 15
OR2175	AC380	2175	0.50	6.90	19.5	40	15.9	Ø480	1655	9 × Ø10 × 15
OR2175	AC380	2175	1.00	13.8	39.0	80	31.8	Ø480	1655	9 × Ø10 × 15
OR2175	AC380	2175	1.25	17.2	39.0	99	39.8	Ø480	1655	9 × Ø10 × 15
OR2175	AC380	2175	1.50	20.7	53.0	119	47.7	Ø480	1655	9 × Ø10 × 15
OR2175	AC380	2175	1.75	24.1	53.0	139	55.7	Ø480	1655	9 × Ø10 × 15
OR2175	AC380	2175	2.00	27.6	60.0	159	63.7	Ø480	1655	9 × Ø10 × 15
OR2175	AC380	2175	2.50	34.5	70.0	199	79.6	Ø480	1655	9 × Ø10 × 15



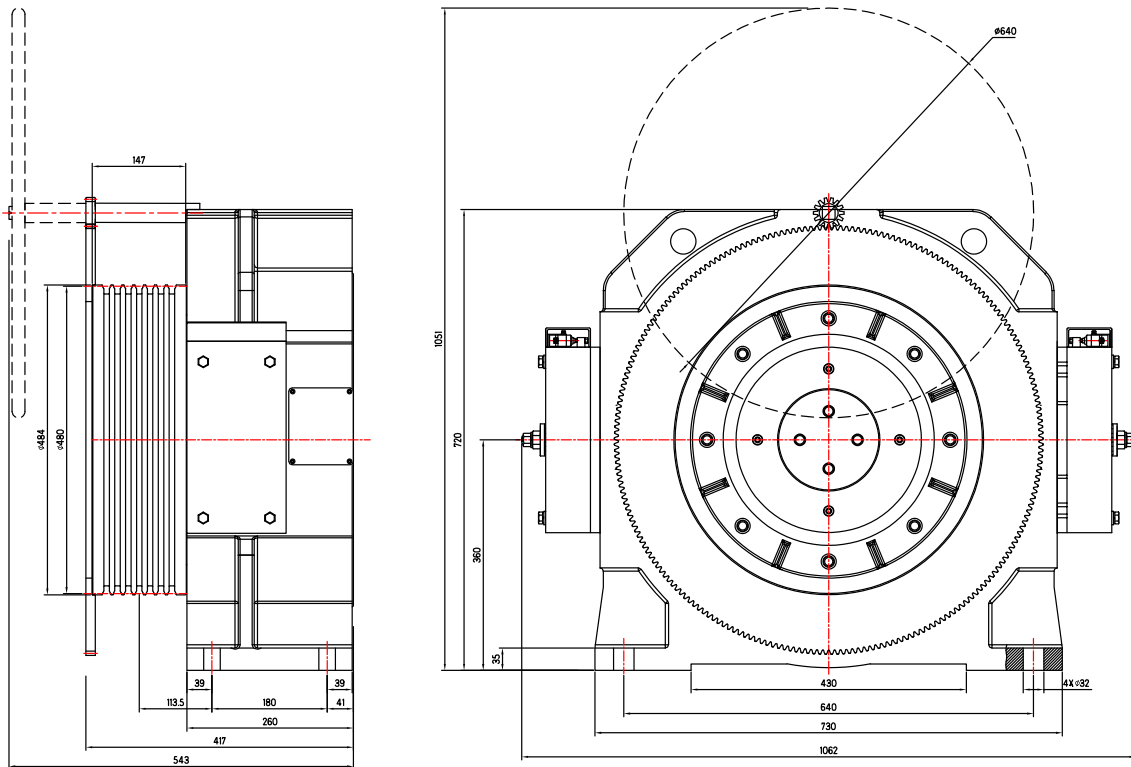


OR SERIES OR2700-3000

OUTER ROTOR PERMANENT MAGNET SYNCHRONOUS ELEVATOR GEARLESS TRACTION MACHINE

ROPING	2:1
BALANCING	50%
DUTY CYCLE	S5-40%
STARTS / HOUR	240 ST/H
GROOVE TYPE	UNDERCUT "U"
IP PROTECTION	IP41
POLE	48
STATIC LOAD	10,000 kg
MACHINE WEIGHT	700 kg*
BRAKE VOLTAGE	DC110V
INSULATION CLASS	F / H
GROOVE β'	90°
GROOVE γ	30°
WARRANTY	5 YEAR*

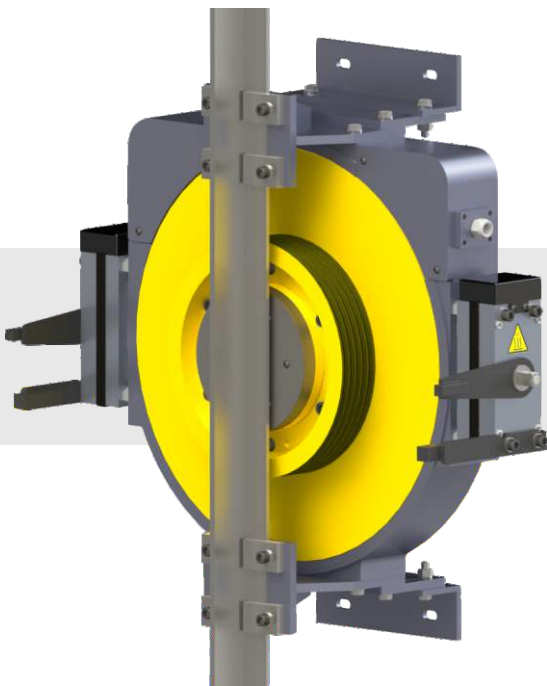




SPECIFICATION SHEET

MODEL	RATED VOLTAGE	CAPACITY	CABIN SPEED	RATED OUTPUT POWER	RATED CURRENT	RATED SPEED	FREQ.	SHEAVE DIA.	TORQUE	GROOVE DETAILS
	V	kg	m/s	kW	A	rpm	Hz	mm	N.m.	
OR2700	AC380	2700	0.50	8.60	24.00	40	15.9	Ø480	2053	9 × Ø10 × 15
OR2700	AC380	2700	1.00	17.1	47.00	80	31.8	Ø480	2053	9 × Ø10 × 15
OR2700	AC380	2700	1.25	21.4	47.00	99	39.8	Ø480	2053	9 × Ø10 × 15
OR2700	AC380	2700	1.50	25.7	63.00	119	47.7	Ø480	2053	9 × Ø10 × 15
OR2700	AC380	2700	1.75	29.9	63.00	139	55.7	Ø480	2053	9 × Ø10 × 15
OR2700	AC380	2700	2.00	34.2	72.00	159	63.7	Ø480	2053	9 × Ø10 × 15
OR2700	AC380	2700	2.50	42.8	90.00	199	79.6	Ø480	2053	9 × Ø10 × 15
OR3000	AC380	3000	0.50	8.50	26.00	40	15.9	Ø480	2283	9 × Ø10 × 15
OR3000	AC380	3000	1.00	19.0	52.00	80	31.8	Ø480	2283	9 × Ø10 × 15
OR3000	AC380	3000	1.25	23.8	52.00	99	39.8	Ø480	2283	9 × Ø10 × 15
OR3000	AC380	3000	1.50	28.5	70.00	119	47.7	Ø480	2283	9 × Ø10 × 15
OR3000	AC380	3000	1.75	33.3	70.00	139	55.7	Ø480	2283	9 × Ø10 × 15
OR3000	AC380	3000	2.00	38.0	80.00	159	63.7	Ø480	2283	9 × Ø10 × 15
OR3000	AC380	3000	2.50	47.6	100.0	199	79.6	Ø480	2283	9 × Ø10 × 15



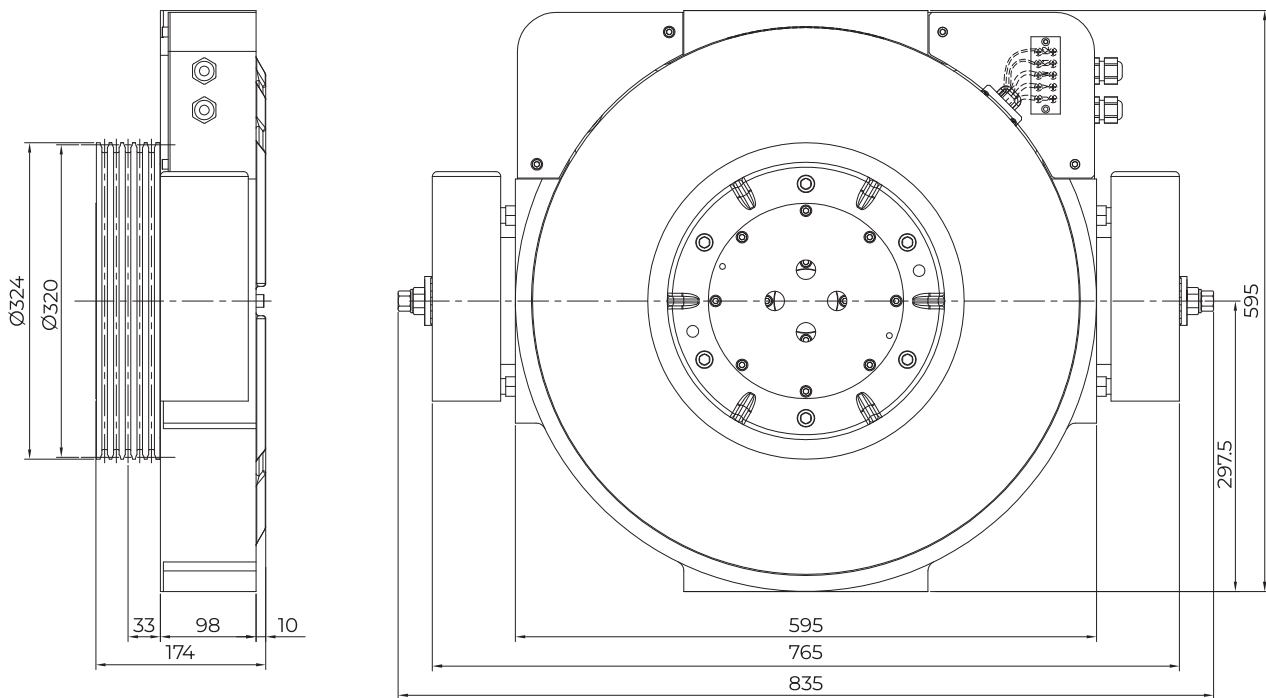


ZF SERIES ZF450-600

DISK ROTOR PERMANENT MAGNET SYNCHRONOUS ELEVATOR GEARLESS TRACTION MACHINE

ROPING	2:1
BALANCING	50%
DUTY CYCLE	S5-40%
STARTS / HOUR	240 ST/H
GROOVE TYPE	UNDERCUT "U"
IP PROTECTION	IP41
POLE	32
STATIC LOAD	3000 kg
MACHINE WEIGHT	180 kg*
BRAKE VOLTAGE	DC110V
INSULATION CLASS	F / H
GROOVE β'	90°
GROOVE γ	30°
WARRANTY	5 YEAR*

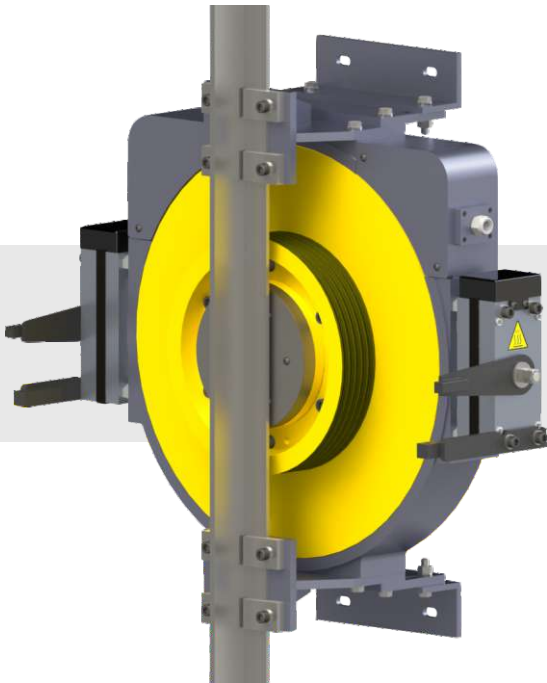




SPECIFICATION SHEET

MODEL	RATED VOLTAGE	CAPACITY	CABIN SPEED	RATED OUTPUT POWER	RATED CURRENT	RATED SPEED	FREQ.	SHEAVE DIA.	TORQUE	GROOVE DETAILS
	V	kg	m/s	kW	A	rpm	Hz	mm	N.m.	
ZF450	AC380	450	1.00	2.90	8.00	119	31.8	Ø320	228	5 × Ø8 × 12
ZF450	AC380	450	1.25	3.60	9.00	149	39.8	Ø320	228	5 × Ø8 × 12
ZF450	AC380	450	1.50	4.30	11.0	179	47.7	Ø320	228	5 × Ø8 × 12
ZF450	AC380	450	1.75	5.00	12.0	209	55.7	Ø320	228	5 × Ø8 × 12
ZF600	AC380	600	1.00	3.80	11.0	119	31.8	Ø320	304	5 × Ø8 × 12
ZF600	AC380	600	1.25	4.80	12.0	149	39.8	Ø320	304	5 × Ø8 × 12
ZF600	AC380	600	1.50	5.70	15.0	179	47.7	Ø320	304	5 × Ø8 × 12
ZF600	AC380	600	1.75	6.70	16.0	209	55.7	Ø320	304	5 × Ø8 × 12



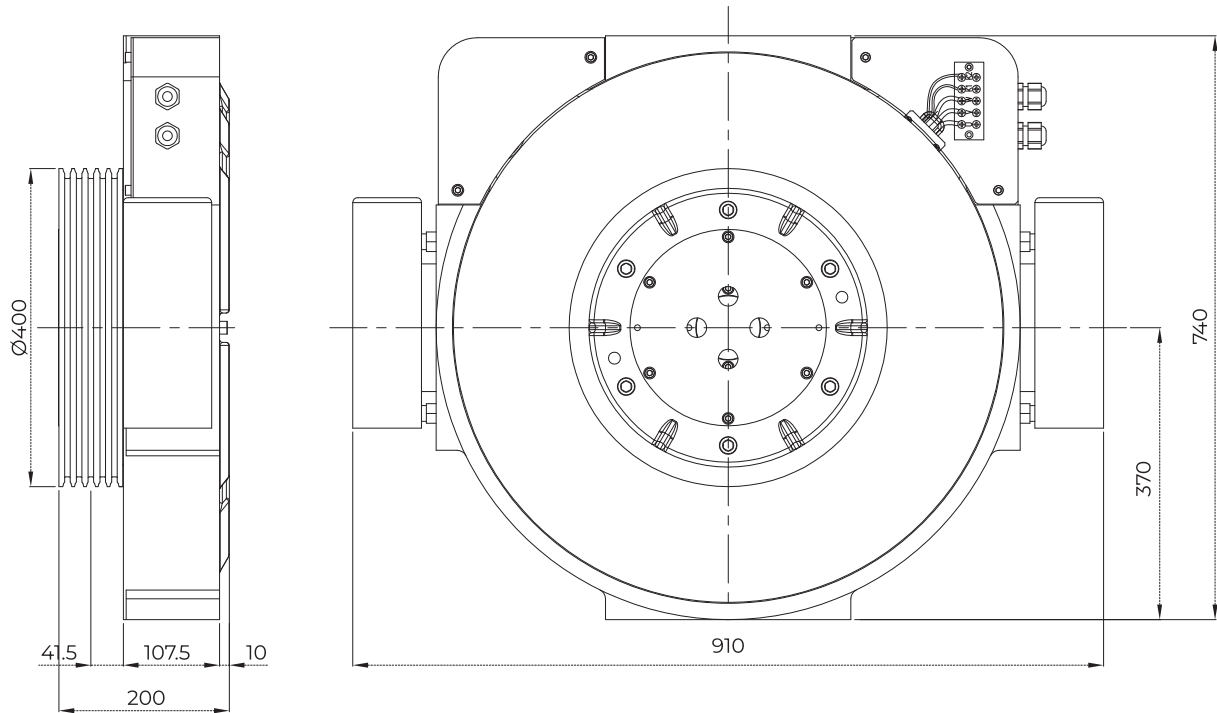


ZF SERIES ZF750-1200

DISK ROTOR PERMANENT MAGNET SYNCHRONOUS ELEVATOR GEARLESS TRACTION MACHINE

ROPING	2:1
BALANCING	50%
DUTY CYCLE	S5-40%
STARTS / HOUR	240 ST/H
GROOVE TYPE	UNDERCUT "U"
IP PROTECTION	IP41
POLE	32
STATIC LOAD	4000 kg
MACHINE WEIGHT	180 kg*
BRAKE VOLTAGE	DC110V
INSULATION CLASS	F / H
GROOVE β'	90°
GROOVE γ	30°
WARRANTY	5 YEAR*





SPECIFICATION SHEET

MODEL	RATED VOLTAGE	CAPACITY	CABIN SPEED	RATED OUTPUT POWER	RATED CURRENT	RATED SPEED	FREQ.	SHEAVE DIA.	TORQUE	GROOVE DETAILS
	V	kg	m/s	kW	A	rpm	Hz	mm	N.m.	
ZF750	AC380	750	1.00	4.80	14.0	95	25.5	Ø400	475	6 × Ø10 × 16
ZF750	AC380	750	1.25	5.90	14.0	119	31.8	Ø400	475	6 × Ø10 × 16
ZF750	AC380	750	1.50	7.10	19.0	143	38.2	Ø400	475	6 × Ø10 × 16
ZF750	AC380	750	1.75	8.30	19.0	167	44.6	Ø400	475	6 × Ø10 × 16
ZF750	AC380	750	2.00	9.50	22.0	191	50.9	Ø400	475	6 × Ø10 × 16
ZF975	AC380	975	1.00	6.20	19.0	95	25.5	Ø400	618	6 × Ø10 × 16
ZF975	AC380	975	1.25	7.70	19.0	119	31.8	Ø400	618	6 × Ø10 × 16
ZF975	AC380	975	1.50	9.30	24.0	143	38.2	Ø400	618	6 × Ø10 × 16
ZF975	AC380	975	1.75	10.8	24.0	167	44.6	Ø400	618	6 × Ø10 × 16
ZF975	AC380	975	2.00	12.4	28.0	191	50.9	Ø400	618	6 × Ø10 × 16
ZF1200	AC380	1200	1.00	7.60	23.0	95	25.5	Ø400	761	6 × Ø10 × 16
ZF1200	AC380	1200	1.25	9.50	23.0	119	31.8	Ø400	761	6 × Ø10 × 16
ZF1200	AC380	1200	1.50	11.4	30.0	143	38.2	Ø400	761	6 × Ø10 × 16
ZF1200	AC380	1200	1.75	13.3	30.0	167	44.6	Ø400	761	6 × Ø10 × 16
ZF1200	AC380	1200	2.00	15.2	35.0	191	50.9	Ø400	761	6 × Ø10 × 16



APSON[®]
MOTOR (INDIA) PRIVATE LIMITED

HEAD QUARTER

APSON EMPIRE, SURVEY NO. 7-2-1/2, NH. 47, AHMEDBAD – INDORE HIGHWAY,
OPP. INDIAN OIL PETROL PUMP, AT - MIRZAPUR, TALUKA KATHALAL,
DIS. – KHEDA, GUJARAT – 387630

REGISTERED OFFICE

PLOT NO. C1-539, ROAD NO. 41, NR. ODHAV POST OFFICE,
G.I.D.C. ODHAV, AHMEDABAD – 382415

E: sales@apson.co.in | M: +91-9924866671

PROUD MEMBER

**E
E
CM
AI**
ELEVATOR & ESCALATOR COMPONENT
MANUFACTURERS' ASSOCIATION OF INDIA

