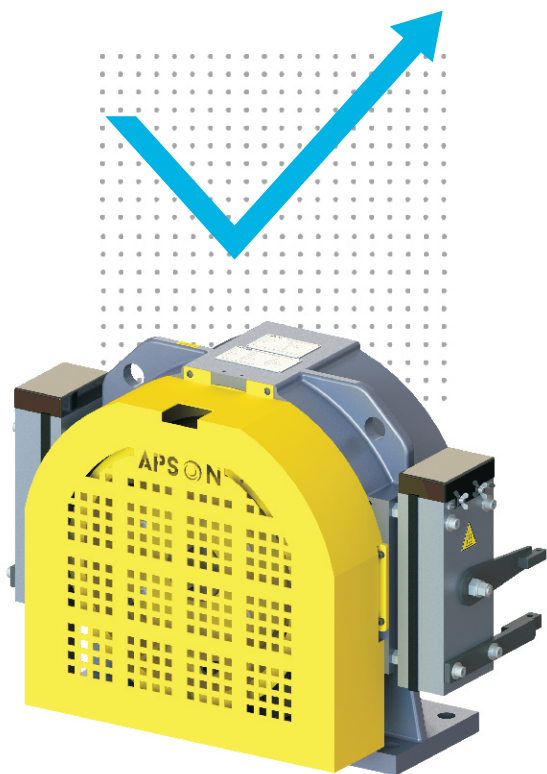


APSON[®]
MOTOR (INDIA) PRIVATE LIMITED

WORLD'S
COMPANY
TO OFFER **1ST**
UP TO 4 YEAR WARRANTY



HIGH

EFFICIENT GEARLESS
TRACTION MACHINE



ABOUT US

APSON is a sister concern company of Rabatex Group founded in 1962; which is well known textile machinery and material handling equipment manufacturing giant across the world. Rabatex Group is producing textile machinery and material handling equipment to export in more than 28 countries.

In year 2016, Rabatex Group established APSON for manufacturing of permanent magnet synchronous motors. In 2018, APSON became India's first company to launch complete range of PMSM for elevator application (Elevator Gearless Traction Machine). With establishment of APSON; we have set trade of high efficient motors in elevator industry which are up to 91.60% power efficient.

We strongly believes that in any department of business; details determines success. Thus at APSON; we always try to go beyond the limit to maintain our quality standards to fulfill our customer satisfaction as well as to get best in us.



VISION

Our vision is to provide advance technology products for every segment of industry which can saves the environment with minimum power consumption at affordable cost.



MISSION

Our mission is to convert all end user of elevator geared traction machine in to elevator gearless traction machine for better growth of the industry as well as environment by energy saving.



INFRASTRUCTURE

In our 20,000 square meter area near to Ahmedabad, currently we have built assembly and testing division in near about 27,400 square feet area. Our production unit is equipped with advance hi-tech equipment for assembly and testing of PMSM for elevator application.

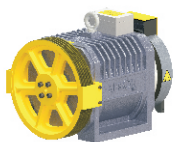
Our production unit is equipped with programmable coil winding machine, various electrical testing equipment for stator winding, dust-proof room for permanent magnet assembly, hydro-pneumatic assembly line for assembly of PMSM, on load test bench for testing of PMSM as well as noise proof room for testing of PMSM after its final assembly. Our current production unit have production capacity up to 1000 PMSM per month. Beside of this we also have expansion plan to make production capacity double whenever we require.

ECO STRONG SERIES



CAPACITY RANGE	UP TO 544 KG
SPEED RANGE	UP TO 1.5 M/S
STATIC LOAD	2000 KG
POLE	24
GROOVE TYPE	UNDERCUT "U"
DUTY CYCLE	S5-30% ED
STARTS / HOUR	160 ST/H
BRAKE VOLTAGE	DC 110 V
WEIGHT	UP TO 160 KG

INNER ROTOR SERIES



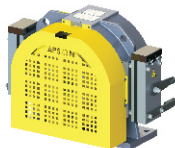
CAPACITY RANGE	UP TO 2175 KG
SPEED RANGE	UP TO 2.5 M/S
STATIC LOAD	UP TO 6000 KG
POLE	24 / 32
GROOVE TYPE	UNDERCUT "U"
DUTY CYCLE	S5-40% ED
STARTS / HOUR	240 ST/H
BRAKE VOLTAGE	DC 110 V
WEIGHT	UP TO 600 KG

BELT DRIVE SERIES



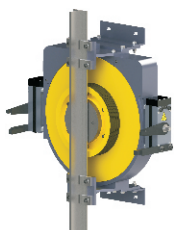
CAPACITY RANGE	UP TO 975 KG
SPEED RANGE	UP TO 1.5 M/S
STATIC LOAD	UP TO 4000 KG
POLE	10 / 24
GROOVE TYPE	UNDERCUT "U"
DUTY CYCLE	S5-40% ED
STARTS / HOUR	240 ST/H
BRAKE VOLTAGE	DC 110 V
WEIGHT	UP TO 300 KG

OUTER ROTOR SERIES



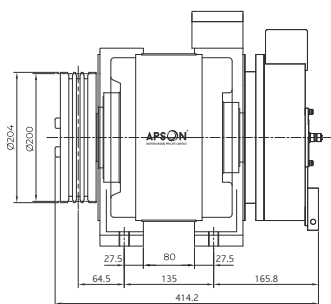
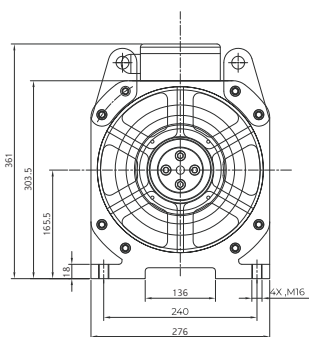
CAPACITY RANGE	UP TO 3000 KG
SPEED RANGE	UP TO 2.5 M/S
STATIC LOAD	UP TO 10,000 KG
POLE	24 / 32 / 48
GROOVE TYPE	UNDERCUT "U"
DUTY CYCLE	S5-40% ED
STARTS / HOUR	240 ST/H
BRAKE VOLTAGE	DC 110 V
WEIGHT	UP TO 1200 KG

ZERO FIGURE SERIES



CAPACITY RANGE	UP TO 1200 KG
SPEED RANGE	UP TO 2.0 M/S
STATIC LOAD	UP TO 4500 KG
POLE	32
GROOVE TYPE	UNDERCUT "U"
DUTY CYCLE	S5-40% ED
STARTS / HOUR	240 ST/H
BRAKE VOLTAGE	DC 110 V
WEIGHT	UP TO 400 KG

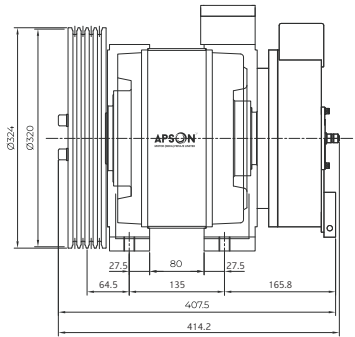
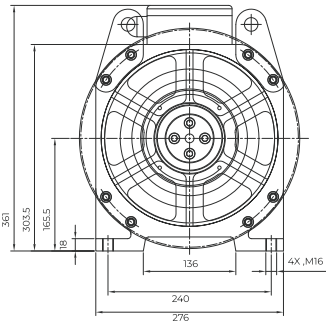
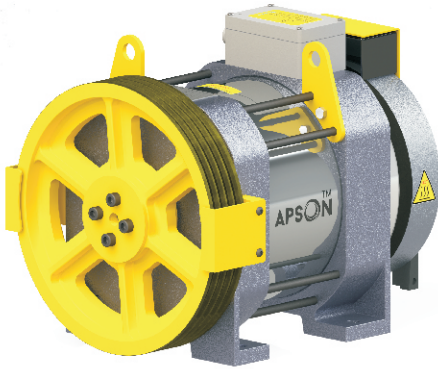
04 Passenger - Gearless Traction Machine



MODEL	ES272-050 (AC220V)	ES272-100 (AC220V)	ES272-100 (AC380V)
CAPACITY	272 KG	272 KG	272 KG
SPEED	0.50 M/S	1.00 M/S	1.00 M/S
RATED VOLTAGE	AC 220V	AC 220V	AC 380V
RATED OUTPUT POWER	1.00 kW	2.00 kW	2.00 kW
RATED CURRENT	6 AMP	10 AMP	6 AMP
SHEAVE DIA.	Ø200 MM	Ø200 MM	Ø200 MM
GROOVE DETAILS	3 x Ø8 x 12MM	3 x Ø8 x 12MM	3 x Ø8 x 12MM
RATED TORQUE	100 N.m.	100 N.m.	100 N.m.
INSULATION CLASS	F	F	F
POLE	24	24	24
FREQUENCY	19.1 Hz	38.2 Hz	38.2 Hz
RPM	95	191	191
STATIC LOAD	1500 KG	1500 KG	1500 KG
BALANCING RATIO	50%	50%	50%
BRAKE VOLTAGE	DC 110V	DC 110V	DC 110V
MACHINE WEIGHT	120 KG*	120 KG*	120 KG*
WARRANTY	2 YEAR (T&C)*	2 YEAR (T&C)*	2 YEAR (T&C)*

Note : With intense of up-gradation in technology, APSON reserves the rights to change machine specification without any prior intimation.

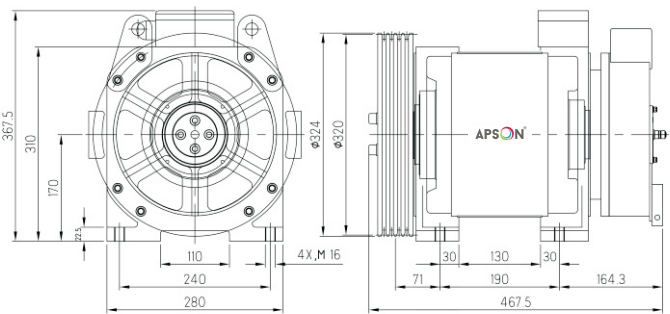
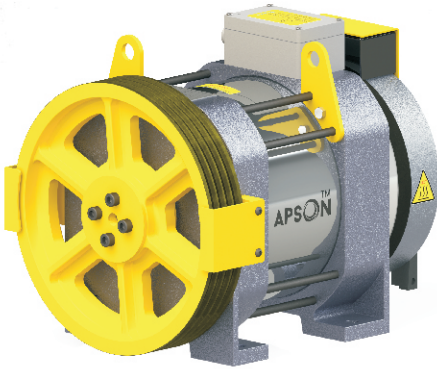
06 Passenger - Gearless Traction Machine



MODEL	ES408-100 (320)	ES408-100 (240)	ES408-100 (200)
CAPACITY	408 KG	408 KG	408 KG
SPEED	1.00 M/S	1.00 M/S	1.00 M/S
RATED VOLTAGE	AC 380V	AC 380V	AC 380V
RATED OUTPUT POWER	2.40 kW	2.40 kW	2.40 kW
RATED CURRENT	8 AMP	8 AMP	8 AMP
SHEAVE DIA.	Ø320 MM	Ø240 MM	Ø200 MM
GROOVE DETAILS	4 x Ø8 x 12MM	4 x Ø8 x 12MM	4 x Ø8 x 12MM
RATED TORQUE	196 N.m.	147 N.m.	122 N.m.
INSULATION CLASS	F	F	F
POLE	24	24	24
FREQUENCY	23.8 Hz	31.8 Hz	38.2 Hz
RPM	119	159	191
STATIC LOAD	1500 KG	1500 KG	1500 KG
BALANCING RATIO	50%	50%	50%
BRAKE VOLTAGE	DC 110V	DC 110V	DC 110V
MACHINE WEIGHT	130 KG*	130 KG*	130 KG*
WARRANTY	2 YEAR (T&C)*	2 YEAR (T&C)*	2 YEAR (T&C)*

Note : With intense of up-gradation in technology, APSON reserves the rights to change machine specification without any prior intimation.

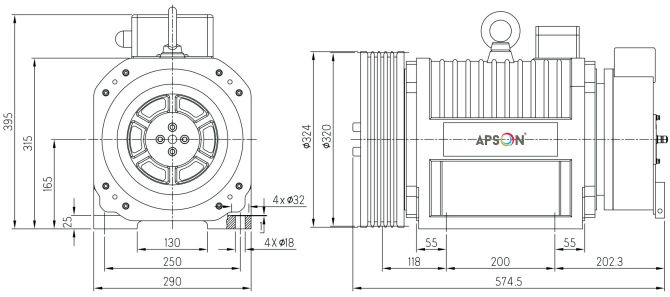
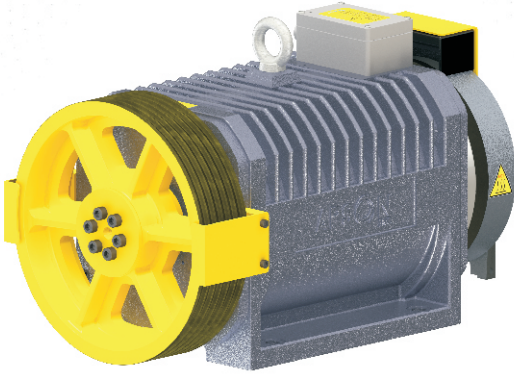
08 Passenger - Gearless Traction Machine



MODEL	ES544-050 (320)	ES544-100 (320)	ES544-150 (320)
CAPACITY	544 KG	544 KG	544 KG
SPEED	0.50 M/S	1.00 M/S	1.50 M/S
RATED VOLTAGE	AC 380V	AC 380V	AC 380V
RATED OUTPUT POWER	2.00 kW	3.70 kW	5.60 kW
RATED CURRENT	7 AMP	9 AMP	13 AMP
SHEAVE DIA.	Ø320 MM	Ø320 MM	Ø320 MM
GROOVE DETAILS	4 x Ø8 x 12MM	4 x Ø8 x 12MM	4 x Ø8 x 12MM
RATED TORQUE	300 N.m.	300 N.m.	300 N.m.
INSULATION CLASS	F	F	F
POLE	24	24	24
FREQUENCY	12 Hz	23.8 Hz	35.8 Hz
RPM	60	119	179
STATIC LOAD	2000 KG	2000 KG	2000 KG
BALANCING RATIO	50%	50%	50%
BRAKE VOLTAGE	DC 110V	DC 110V	DC 110V
MACHINE WEIGHT	160 KG*	160 KG*	160 KG*
WARRANTY	2 YEAR (T&C)*	2 YEAR (T&C)*	2 YEAR (T&C)*

Note : With intense of up-gradation in technology, APSON reserves the rights to change machine specification without any prior intimation.

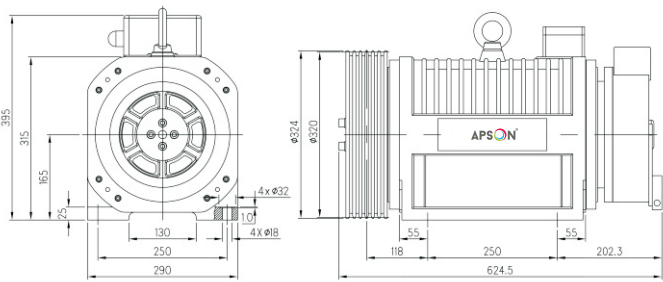
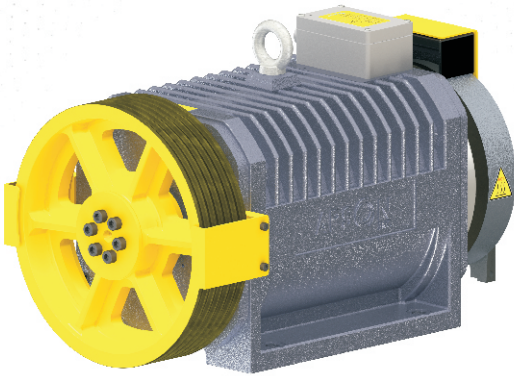
10 Passenger - Gearless Traction Machine



MODEL	IR680-100 (320)	IR680-150 (320)	IR680-200 (320)
CAPACITY	680 KG	680 KG	680 KG
SPEED	1.00 M/S	1.50 M/S	2.00 M/S
RATED VOLTAGE	AC 380V	AC 380V	AC 380V
RATED OUTPUT POWER	4.50 kW	6.80 kW	9.10 kW
RATED CURRENT	14 AMP	19 AMP	22 AMP
SHEAVE DIA.	ϕ 320 MM	ϕ 320 MM	ϕ 320 MM
GROOVE DETAILS	5 x ϕ 8 x 12MM	5 x ϕ 8 x 12MM	5 x ϕ 8 x 12MM
RATED TORQUE	363 N.m.	363 N.m.	363 N.m.
INSULATION CLASS	H	H	H
POLE	24	24	24
FREQUENCY	23.8 Hz	35.8 Hz	47.7 Hz
RPM	119	179	239
STATIC LOAD	3000 KG	3000 KG	3000 KG
BALANCING RATIO	50%	50%	50%
BRAKE VOLTAGE	DC 110V	DC 110V	DC 110V
MACHINE WEIGHT	225 KG*	225 KG*	225 KG*
WARRANTY	4 YEAR (T&C)*	4 YEAR (T&C)*	4 YEAR (T&C)*

Note : With intense of up-gradation in technology, APSON reserves the rights to change machine specification without any prior intimation.

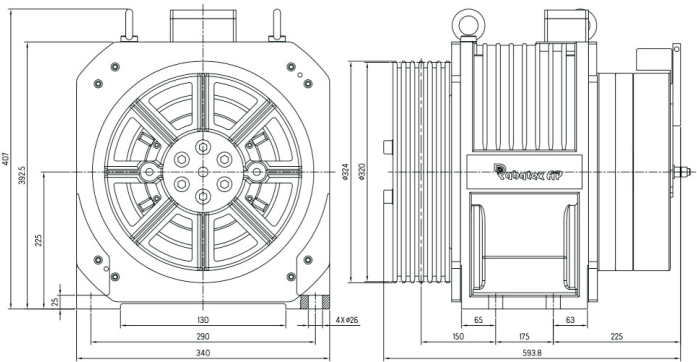
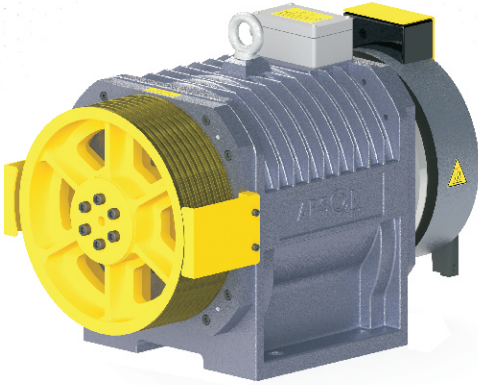
13 Passenger - Gearless Traction Machine



MODEL	IR884-100 (320)	IR884-150 (320)	IR884-200 (320)
CAPACITY	884 KG	884 KG	884 KG
SPEED	1.00 M/S	1.50 M/S	2.00 M/S
RATED VOLTAGE	AC 380V	AC 380V	AC 380V
RATED OUTPUT POWER	5.30 kW	7.90 kW	10.60 kW
RATED CURRENT	16 AMP	21 AMP	24 AMP
SHEAVE DIA.	Ø320 MM	Ø320 MM	Ø320 MM
GROOVE DETAILS	6 x Ø8 x 12MM	6 x Ø8 x 12MM	6 x Ø8 x 12MM
RATED TORQUE	424 N.m.	424 N.m.	424 N.m.
INSULATION CLASS	H	H	H
POLE	24	24	24
FREQUENCY	23.8 Hz	35.8 Hz	47.7 Hz
RPM	119	179	239
STATIC LOAD	3000 KG	3000 KG	3000 KG
BALANCING RATIO	50%	50%	50%
BRAKE VOLTAGE	DC 110V	DC 110V	DC 110V
MACHINE WEIGHT	250 KG*	250 KG*	250 KG*
WARRANTY	4 YEAR (T&C)*	4 YEAR (T&C)*	4 YEAR (T&C)*

Note : With intense of up-gradation in technology, APSON reserves the rights to change machine specification without any prior intimation.

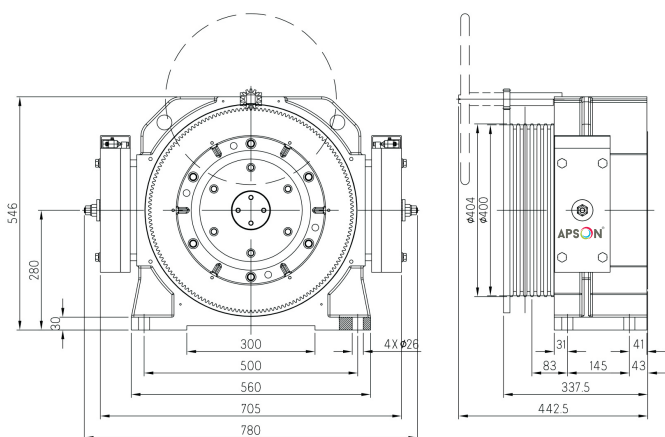
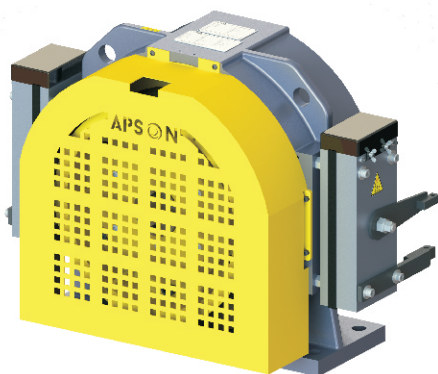
16 Passenger - Gearless Traction Machine



MODEL	IR1088-100	IR1088-150	IR1088-200
CAPACITY	1088 KG	1088 KG	1088 KG
SPEED	1.00 M/S	1.50 M/S	2.00 M/S
RATED VOLTAGE	AC 380V	AC 380V	AC 380V
RATED OUTPUT POWER	6.50 kW	11.40 kW	13.00 kW
RATED CURRENT	19 AMP	27 AMP	31 AMP
SHEAVE DIA.	Ø320 MM	Ø320 MM	Ø320 MM
GROOVE DETAILS	7 x Ø8 x 12MM	7 x Ø8 x 12MM	7 x Ø8 x 12MM
RATED TORQUE	522 N.m.	522 N.m.	522 N.m.
INSULATION CLASS	H	H	H
POLE	24	24	24
FREQUENCY	23.8 Hz	35.8 Hz	47.7 Hz
RPM	119	179	239
STATIC LOAD	4000 KG	4000 KG	4000 KG
BALANCING RATIO	50%	50%	50%
BRAKE VOLTAGE	DC 110V	DC 110V	DC 110V
MACHINE WEIGHT	300 KG*	300 KG*	300 KG*
WARRANTY	4 YEAR (T&C)*	4 YEAR (T&C)*	4 YEAR (T&C)*

Note : With intense of up-gradation in technology, APSON reserves the rights to change machine specification without any prior intimation.

20 Passenger - Gearless Traction Machine



MODEL	OR1360-100	OR1360-150	OR1360-175
CAPACITY	1360 KG	1360 KG	1360 KG
SPEED	1.00 M/S	1.50 M/S	1.75 M/S
RATED VOLTAGE	AC 380V	AC 380V	AC 380V
RATED OUTPUT POWER	8.00 kW	12.00 kW	14.00 kW
RATED CURRENT	22 AMP	30 AMP	30 AMP
SHEAVE DIA.	Ø400 MM	Ø400 MM	Ø400 MM
GROOVE DETAILS	6 x Ø10 x 16 MM	6 x Ø10 x 16 MM	6 x Ø10 x 16 MM
RATED TORQUE	800 N.m.	800 N.m.	800 N.m.
INSULATION CLASS	H	H	H
POLE	32	32	32
FREQUENCY	25.5 Hz	38.2 Hz	44.6 Hz
RPM	95	143	167
STATIC LOAD	4500 KG	4500 KG	4500 KG
BALANCING RATIO	50%	50%	50%
BRAKE VOLTAGE	DC 110V	DC 110V	DC 110V
MACHINE WEIGHT	355 KG*	355 KG*	355 KG*
WARRANTY	4 YEAR (T&C)*	4 YEAR (T&C)*	4 YEAR (T&C)*

Note : With intense of up-gradation in technology, APSON reserves the rights to change machine specification without any prior intimation.

WHY APSON ?



World's 1st company to offer up to **4 Year warranty.**

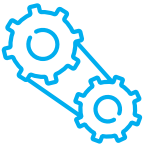


India's biggest and most advance manufacturing unit for elevator **gearless** traction machine.



India's most successful manufacturer of elevator traction machine.

99.65% successful installation



Super premium **efficiency motor.**
India's most premium elevator gearless traction machine.



One stop solution for all your need of elevator traction machine.

KEY PROJECTS



Cement Plant - Goods Elevator

Our 3000 kg capacity machine has been install in elevator to travel 127 meter travelling height at the speed of 1.0 m/s.



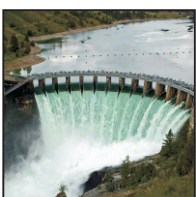
HQ of National Highway Authority of India

Our 2700 kg capacity machine having speed of 1.5 m/s has been install in elevator to travel 4.5 meter height.



Key Government Projects

- Government medical college
- Reserve Bank of India, Patna
- Railway Stations



Supa Dam Hydroelectric Power Station

Our 1360 kg capacity machine having speed of 1.5 m/s has been install in elevator to travel 93 meter height in water dam project.



APSON[®]
MOTOR (INDIA) PRIVATE LIMITED

Register Office :

Plot No. C1 – 539, Road No. 41,
Nr. Odhav Post Office, GIDC, Odhav,
Ahmedabad – 382415, Gujarat, India.

☎ : +919725219240 / 41

☎ : +91 9924866671

✉ : sales@apson.co.in

🌐 : www.apson.co.in

Manufacturing Unit :

Apson Empire, Survey No. 7-2-1/2,
Nh. 47, Ahmedabad - Indore Highway,
Opp. Indian Oil Petrol Pump,
At. Mirzapur, Ta. Kathalal,
Dist. - Kheda - 387635, Gujarat, India.

☎ : +919725219240 / 41

☎ : +91 9924866671

✉ : sales@apson.co.in

🌐 : www.apson.co.in



ISO 9001:2015

